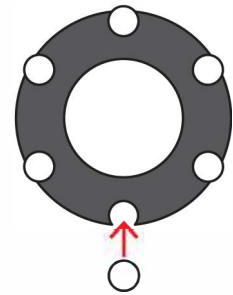




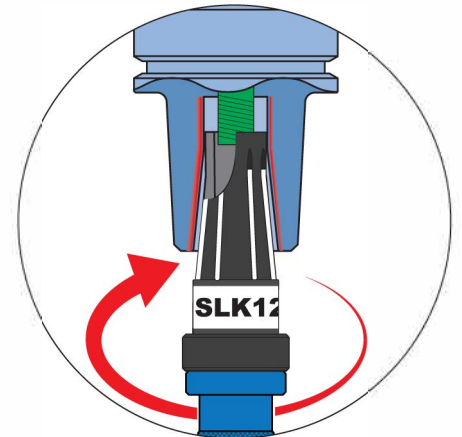
## SPINDLE TAPER CLEANING TOOL

Wiper Type

*Reusable & Renewable !*



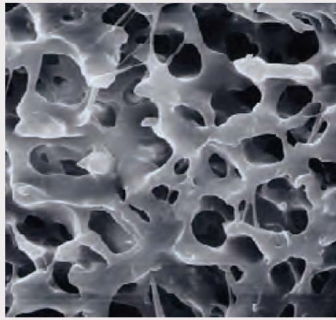
Replaceable wiper



**ON TARGET**  
**TOOLING** LLC  
262-219-9129

[www.ontargettooling.com](http://www.ontargettooling.com)

[sales@ontargettooling.com](mailto:sales@ontargettooling.com)



- Replaceable Wiper Design insures best economy (2-4 Indexes)
- Fresh Wiper edge leave no residual chips leading to taper scratching.
- Remove oil stains & small cutting chips with micro-pores.
- Highly effective in complete cleaning of small machine tapers



### Plug

For machine spindle



For tool holder



### Grip



### Cleaning tools

#### Brush type

Be sure to clean holders before shrink-fitting.



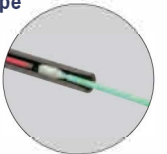
#### Rubber grinding stone type

When it is getting hard to insert cutters!



#### Felt type

Easy cleaning for small hole



### For Machine Spindle

Cleaner tool Assembly #		Adaptive main spindle	Plug code	Wiper set code	Grip code
CLT-NT30	G2	BT30 / DN30 / CAT30	CLT-NT30	CWP-NT30	GR25 * 100
-NT40	G3	BT40 / DN40 / CAT40	CLT-NT40	CWP-NT40	GR35 * 100
-NT50	G3	BT50 / DN50 / CAT50	CLT-NT50	CWP-NT50	GR35 * 100
-E25	G1	HSK-E25	CLT-E25	CWP-E25	GR18 * 80
-E32	G1	HSK-E32	CLT-E32	CWP-E32	GR18 * 80
-A40	G2	HSK-A40 / T40	CLT-A40	CWP-A40	GR25 * 100
-E40	G2	HSK-E40	CLT-E40	CWP-E40	GR25 * 100
-A50	G2	HSK-A50 / T50	CLT-A50	CWP-A50	GR25 * 100
-E50	G2	HSK-E50	CLT-E50	CWP-E50	GR25 * 100
-F63	G2	HSK-F63	CLT-F63	CWP-F63	GR25 * 100
-A63	G3	HSK-A63 / T63	CLT-A63	CWP-A63	GR35 * 100
-F80	G3	HSK-F80	CLT-F80	CWP-F80	GR35 * 100
-A100	G3	HSK-A100/T100	CLT-A100	CWP-A100	GR35 * 100

### MST Tool Holder

Cleaner tool Assembly #		Adaptive tool holder	Plug code	Wiper set code	Grip code
CLT-SLK6	G1	SLK6	CLT-SLK 6	CWP-SLK 6	GR18 * 80
-SLK8	G1	SLK8	CLT-SLK 8	CWP-SLK 8	GR18 * 80
-SLK12	G2	SLK12	CLT-SLK12	CWP-SLK12	GR25 * 100
-C10	G1	CTH10/CTA10	CLT-C10	CWP-C10	GR18 * 80
-C20	G2	CTH20/CTA20	CLT-C20	CWP-C20	GR25 * 100
-C25	G3	CTH25/CTA25	CLT-C25	CWP-C25	GR35 * 100
-D7	G1	DTA7/DTB7/DTE7	CLT-D 7	CWP-D 7	GR18 * 80
-D12	G2	DTA12/DTB12/DTE12	CLT-D12	CWP-D12	GR25 * 100

### Clean BOX

Wash the tooling holders, collets, nuts and cutting tools thoroughly to maintain their high accuracy.

