

I N F I N I T E

I-SYSTEM TOOL HOLDERS

Modular Tool Holder System from PrimeTool



SOLD IN NORTH AMERICA BY ON TARGET TOOLING, LLC





INFINITE I-SYSTEM TOOL HOLDER

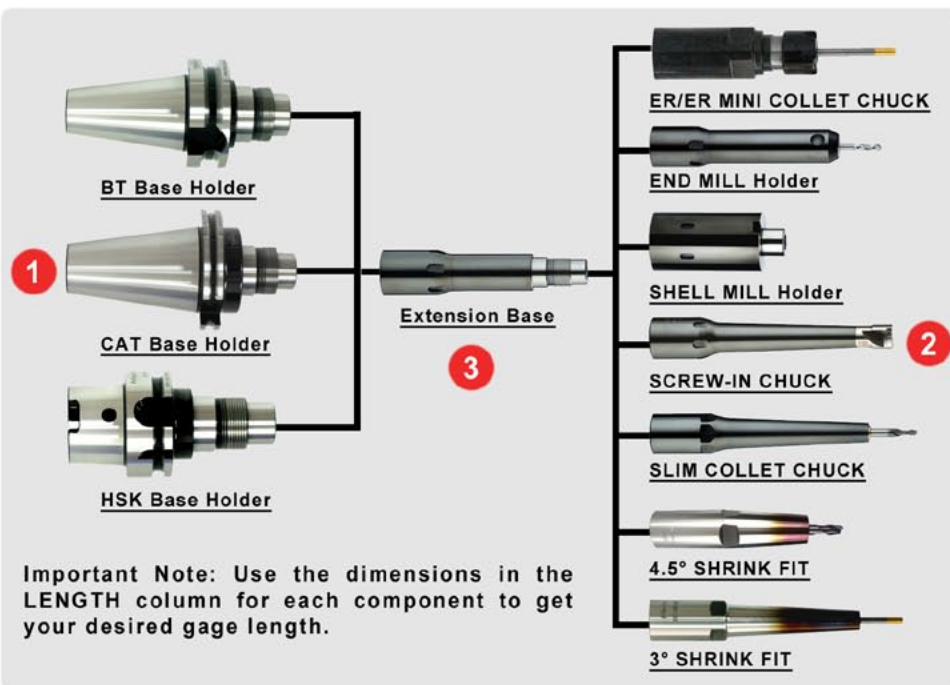
The Infinite Tool Holder System utilizes a patented tool holder base available in the most popular machine tapers featuring eight different "IR" coupling sizes. The base and couplings have highly accurate ground pilot diameters and threads providing excellent concentricity and rigidity to allow limitless tool holder lengths.

Infinite Tool holder system provides the ultimate in customer interchangeability.

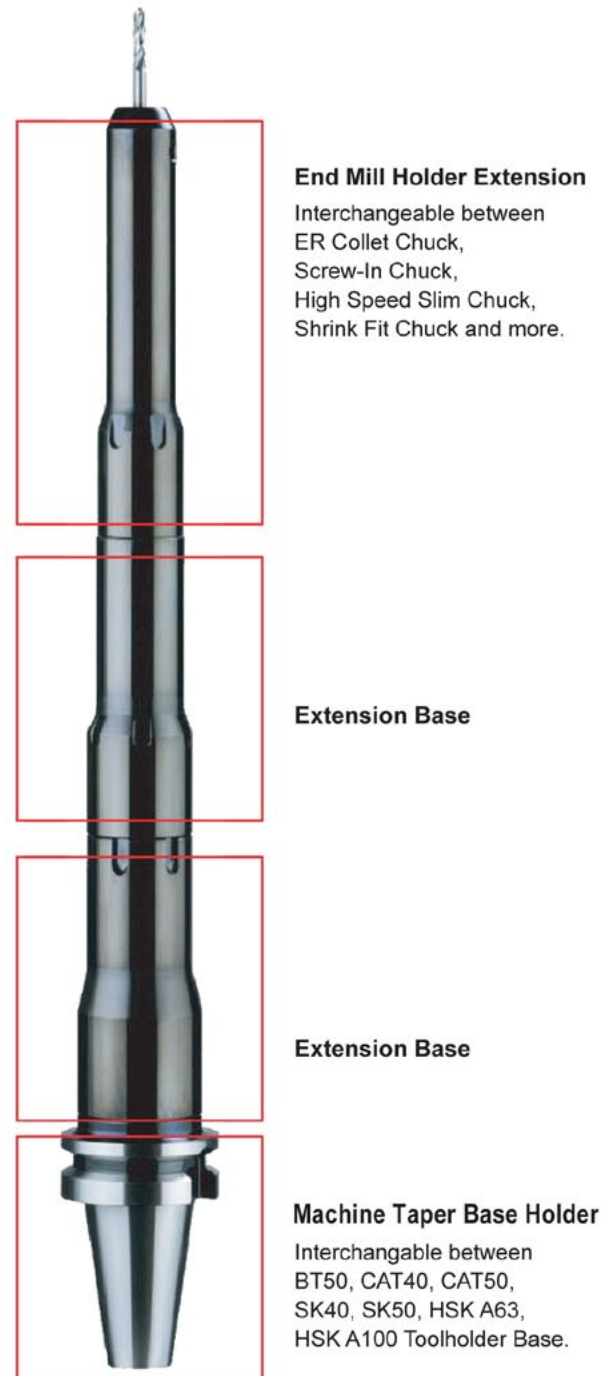
Prime Tool Holder Selection Process:

- 1 Select Machine Taper Base Holder w/ suitable Coupling Size.
- 2 Select End Piece for clamping of cutting tool.
 - ER/ER MINI Collet Chuck
 - End Mill Holder
 - Shell Mill Holder
 - Screw In Chuck
 - Slim Collet Chuck
 - 4.5°/3° Shrink Holder
 - 3 Deg Shrink Holder
- 3 Select Extension with base coupling that matches base holder and front end coupling size that matches the next extension or end piece.

Taper	Coupling	
• CAT	• IR08	• IR25
• BT	• IR08S	• IR32
• HSK	• IR11	• IR40
	• IR16	• IR41
	• IR20	• IR42



Important Note: Use the dimensions in the LENGTH column for each component to get your desired gage length.

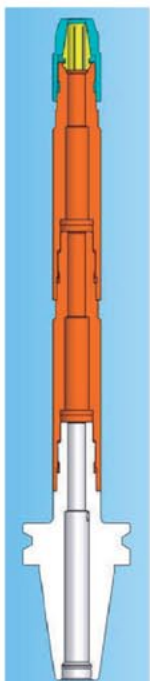


End Mill Holder Extension
Interchangeable between ER Collet Chuck, Screw-In Chuck, High Speed Slim Chuck, Shrink Fit Chuck and more.

Extension Base

Extension Base

Machine Taper Base Holder
Interchangeable between BT50, CAT40, CAT50, SK40, SK50, HSK A63, HSK A100 Toolholder Base.



End Mill Holder Extension
Interchangeable between ER Collet Chuck, Screw-In Chuck, High Speed Slim Chuck, Shrink Fit Chuck and more.

Machine Taper Base Holder
Interchangeable between BT50, CAT40, CAT50, SK40, SK50, HSK A63, HSK A100 Toolholder Base.

I N T R O D U C I N G

The exclusive patented design of the

I-SYSTEM TOOL HOLDER

1	CAT Base Holder
2	BT Base Holder
3	HSK A Base Holder
4	HSK E Base Holder
5	HSK F Base Holder
6-9	Extension Base Shank (926)
10	ER Collet Chuck - Mini Nut Extension (M20)
11	ER Collet Chuck - Extension (020)
12-13	End Mill Holder - Extension (040)
14-15	Shell Mill Holder - Extension (130)
16	Screw In Chuck - Extension (200)
17	Slim Collet Chuck -Extension (210)
18-19	4.5° Shrink Fit Chuck - Extension (220)
20	4.5° Shrink Fit Chuck - Slim Extension (230)
21-22	3° Shrink Fit Chuck - Extension (240)
23-24	3° Shrink Fit Chuck - Slim Extension (250)
25-26	Wrenches
27	Universal CNC Tightening System (T50)



CAT BASE HOLDER

I System Tool Holder

Taper Angle Tolerance: AT3+
 Case Hardened: HRC 58±2
 Seat Runout: 0.003mm
 Balance: G6.3, 25,000 rpm *Option to G2.5, 25,000 rpm

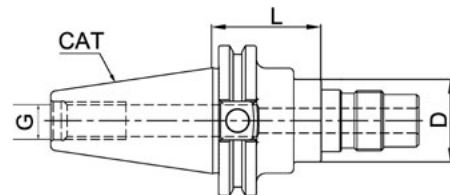
CAT40, I SYSTEM, BASE FOR EXTENSION

Order Number	Part Name	Base	Length	D	L	G	Weight (lbs)
T00CA40926-08102A	CAT40 IR08-4"-EX	IR08	4.00" (101.6)	0.472" (12)	2.055" (52.2)	5/8"-11	2.27
T00CA40926-8S072A	CAT40 IR8S-2.82"-EX	IR8S	2.82" (71.62)	0.630" (16)	2.055" (52.2)		2.27
T00CA40926-11102A	CAT40 IR11-4"-EX	IR11	4.00" (101.6)	0.748" (19)	2.622" (66.6)		2.36
T00CA40926-16102A	CAT40 IR16-4"-EX	IR16	4.00" (101.6)	1.102" (28)	1.874" (47.6)		2.43
T00CA40926-20102A	CAT40 IR20-4"-EX	IR20	4.00" (101.6)	1.339" (34)	1.835" (46.6)		2.58
T00CA40926-25102A	CAT40 IR25-4"-EX	IR25	4.00" (101.6)	1.654" (42)	1.559" (39.6)		2.69
T00CA40926-32120A	CAT40 IR32-4.72"-EX	IR32	4.72" (120)	1.969" (50)	2.146" (54.5)		3.40
T00CA40926-32120AG	CAT40 IR32-4.72"-EXG	IR32	4.72" (120)	1.969" (50)	2.146" (54.5)		3.40
T00CA40926-40120A	CAT40 IR40-4.72"-EX	IR40	4.72" (120)	2.480" (63)	1.988" (50.5)		3.64

CAT50, I SYSTEM, BASE FOR EXTENSION

Order Number	Part Name	Base	Length	D	L	G	Weight (lbs)
T00CA50926-08072A	CAT50 IR8-2.82"-EX	IR08	2.82" (71.62)	0.472" (12)	2.055" (52.2)	1"-8	6.62
T00CA50926-8S072A	CAT50 IR8S-2.82"-EX	IR8S	2.82" (71.62)	0.630" (16)	2.055" (52.2)		6.64
T00CA50926-11102A	CAT50 IR11-4"-EX	IR11	4.00" (101.6)	0.748" (19)	2.622" (66.6)		6.79
T00CA50926-16102A	CAT50 IR16-4"-EX	IR16	4.00" (101.6)	1.102" (28)	1.874" (47.6)		6.92
T00CA50926-20102A	CAT50 IR20-4"-EX	IR20	4.00" (101.6)	1.339" (34)	1.835" (46.6)		6.99
T00CA50926-25102A	CAT50 IR25-4"-EX	IR25	4.00" (101.6)	1.654" (42)	1.559" (39.6)		7.12
T00CA50926-32102A	CAT50 IR32-4"-EX	IR32	4.00" (101.6)	2.75" (69.85)	1.421" (36.1)		7.17
T00CA50926-32102AG	CAT50 IR32-4.00"-EXG	IR32	4.00" (101.6)	2.75" (69.85)	1.421" (36.1)		1.17
T00CA50926-40105A	CAT50 IR40-4.13"-EX	IR40	4.13" (104.9)	2.75" (69.85)	1.398" (35.5)		7.61

CAT40 & CAT50
BASE HOLDER





BT BASE HOLDER

I System Tool Holder

Taper Angle Tolerance: AT3+
 Case Hardened: HRC 58±2
 Seat Runout: 0.003mm
 Balance: G6.3, 25,000 rpm *Option to G2.5, 25,000 rpm

BT30 I SYSTEM , BASE FOR EXTENSION

Order Number	Part Name	Base	Length	D	L	G	Weight (lbs)
T00BT30926-08070A	BT30 IR08-070-EX	IR08	70 (2.756")	12 (0.472")	50.6 (1.992")	M12	1.08
T00BT30926-11100A	BT30 IR11-100-EX	IR11	100 (3.937")	19 (0.748")	65 (2.559")		1.08
T00BT30926-16100A	BT30 IR16-100-EX	IR16	100 (3.937")	28 (1.102")	46 (1.811")		1.21
T00BT30926-20100A	BT30 IR20-100-EX	IR20	100 (3.937")	34 (1.339")	45 (1.772")		1.43
T00BT30926-25100A	BT30 IR25-100-EX	IR25	100 (3.937")	42 (1.654")	38 (1.496")		1.59
T00BT30926-32100A	BT30 IR32-100-EX	IR32	100 (3.937")	50 (1.969")	34.5 (1.358")		1.63

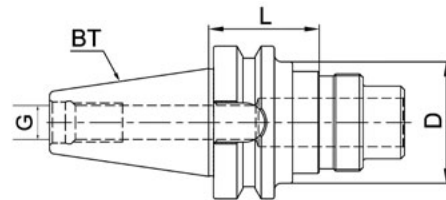
BT40 I SYSTEM , BASE FOR EXTENSION

Order Number	Part Name	Base	Length	D	L	G	Weight (lbs)
T00BT40926-08070A	BT40 IR08-070-EX	IR08	70 (2.756")	12 (0.472")	50.6 (1.992")	M16	2.40
T00BT40926-11070A	BT40 IR11-070-EX	IR11	70 (2.756")	19 (0.748")	35 (1.378")		2.18
T00BT40926-11100A	BT40 IR11-100-EX	IR11	100 (3.937")	19 (0.748")	65 (2.559")		2.27
T00BT40926-16100A	BT40 IR16-100-EX	IR16	100 (3.937")	28 (1.102")	46 (1.811")		2.40
T00BT40926-20100A	BT40 IR20-100-EX	IR20	100 (3.937")	34 (1.339")	45 (1.772")		2.58
T00BT40926-25100A	BT40 IR25-100-EX	IR25	100 (3.937")	42 (1.654")	38 (1.496")		2.76
T00BT40926-32100A	BT40 IR32-100-EX	IR32	100 (3.937")	50 (1.969")	34.5 (1.358")		2.98
T00BT40926-40100A	BT40 IR40-100-EX	IR40	100 (3.937")	63 (2.480")	30.5 (1.201")		3.64

BT50 I SYSTEM , BASE FOR EXTENSION

Order Number	Part Name	Base	Length	D	L	G	Weight (lbs)
T00BT50926-11100A	BT50 IR11-100-EX	IR11	100 (3.937")	19 (0.748")	65 (2.559")	M24	7.83
T00BT50926-16100A	BT50 IR16-100-EX	IR16	100 (3.937")	28 (1.102")	46 (1.811")		7.30
T00BT50926-20100A	BT50 IR20-100-EX	IR20	100 (3.937")	34 (1.339")	45 (1.772")		7.63
T00BT50926-25110A	BT50 IR25-110-EX	IR25	110 (4.331")	42 (1.654")	48 (1.890")		7.94
T00BT50926-32110A	BT50 IR32-110-EX	IR32	110 (4.331")	50 (1.969")	44.5 (1.752")		8.16
T00BT50926-40120A	BT50 IR40-120-EX	IR40	120 (4.724")	63 (2.480")	50.5 (1.988")		9.04

BT 30, 40, 50
BASE HOLDER



HSK A BASE HOLDER



Taper Angle Tolerance: AT3+
 Case Hardened: HRC 58±2
 Seat Runout: 0.005mm
 Balance: G2.5, 25,000 rpm *Option to G2.5, 40,000 rpm

I System Tool Holder

HSK A40, I SYSTEM, BASE FOR EXTENSION

Order Number	Part Name	Base	Length	D	L	Weight (lbs)
T00HA40926-08050	HSK A40 IR08-050-EX	IR08	50 (1.969")	12 (0.472")	30.6 (1.205")	1.48
T00HA40926-11080	HSK A40 IR11-080-EX	IR11	80 (3.150")	19 (0.748")	45 (1.772")	1.52
T00HA40926-16080	HSK A40 IR16-080-EX	IR16	80 (3.150")	28 (1.102")	26 (1.024")	1.65
T00HA40926-20080	HSK A40 IR20-080-EX	IR20	80 (3.150")	34 (1.339")	25 (0.984")	1.76

HSK A63, I SYSTEM, BASE FOR EXTENSION

Order Number	Part Name	Base	Length	D	L	Weight (lbs)
T00HA63926-08070	HSK A63 IR08-070-EX	IR08	70 (2.756")	12 (0.472")	50.6 (1.992")	1.48
T00HA63926-11070	HSK A63 IR11-070-EX	IR11	70 (2.756")	19 (0.748")	35 (1.378")	1.52
T00HA63926-11100	HSK A63 IR11-100-EX	IR11	100 (3.937")	19 (0.748")	65 (2.559")	1.65
T00HA63926-16100	HSK A63 IR16-100-EX	IR16	100 (3.937")	28 (1.102")	46 (1.811")	1.76
T00HA63926-20100	HSK A63 IR20-100-EX	IR20	100 (3.937")	34 (1.339")	45 (1.772")	1.90
T00HA63926-25100	HSK A63 IR25-100-EX	IR25	100 (3.937")	42 (1.654")	38 (1.496")	2.43
T00HA63926-32110	HSK A63 IR32-110-EX	IR32	110 (4.331")	50 (1.969")	44.5 (1.752")	2.60
T00HA63926-40120	HSK A63 IR40-120-EX	IR40	120 (4.724")	63 (2.480")	50.5 (1.988")	3.40

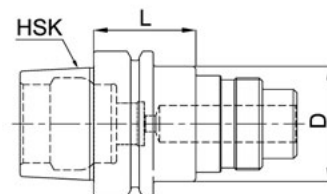
HSK A100, I SYSTEM, BASE FOR EXTENSION

Order Number	Part Name	Base	Length	D	L	Weight (lbs)
T00HA10926-11100	HSK A100 IR11-100-EX	IR11	100 (3.937")	19 (0.748")	65 (2.559")	4.70
T00HA10926-16100	HSK A100 IR16-100-EX	IR16	100 (3.937")	28 (1.102")	46 (1.811")	4.69
T00HA10926-20100	HSK A100 IR20-100-EX	IR20	100 (3.937")	34 (1.339")	45 (1.772")	4.84
T00HA10926-25100	HSK A100 IR25-100-EX	IR25	100 (3.937")	42 (1.654")	38 (1.496")	4.94
T00HA10926-32110	HSK A100 IR32-110-EX	IR32	110 (4.331")	50 (1.969")	44.5 (1.752")	5.31
T00HA10926-40120	HSK A100 IR40-120-EX	IR40	120 (4.724")	63 (2.480")	50.5 (1.988")	5.42

HSK A125, I SYSTEM, BASE FOR EXTENSION

Order Number	Part Name	Base	Length	D	L	Weight (lbs)
T00HA12926-16100	HSK A125 IR16-100-EX	IR16	100 (3.937")	50 (1.969")	46 (1.811")	8.03
T00HA12926-20100	HSK A125 IR20-100-EX	IR20	100 (3.937")	50 (1.969")	45 (1.772")	8.00
T00HA12926-25110	HSK A125 IR25-110-EX	IR25	110 (4.331")	50 (1.969")	48 (1.890")	8.31
T00HA12926-32110	HSK A125 IR32-110-EX	IR32	110 (4.331")	50 (1.969")	44.5 (1.752")	8.36
T00HA12926-40120	HSK A125 IR40-120-EX	IR40	120 (4.724")	63 (2.480")	50.5 (1.988")	9.04
T00HA12926-42120	HSK A125 IR42-120-EX	IR42	120 (4.724")	85 (3.346")	50.5 (1.988")	9.04

HSK A
BASE HOLDER



HSK E BASE HOLDER



Taper Angle Tolerance: $\pm 0.003\text{mm}$
 Case Hardened: HRC 56 ± 2
 Seat Runout: 0.003mm
 Balance: G2.5, 25,000 rpm *Option to G2.5, 60,000 rpm

I System Tool Holder

HSK E25, I SYSTEM, BASE FOR EXTENSION

Order Number	Part Name	Base	Length	D	L	Weight (lbs)
T00HE25926-08040	HSK E25 IR08-040-EX	IR08	40 (1.574)	12 (0.472")	20.6 (0.811")	x
T00HE25926-8S040	HSK E25 IR8S-040-EX	IR8S	40 (1.574)	16 (0.630")	20.6 (0.811")	x
T00HE25926-11050	HSK E25 IR11-050-EX	IR11	50 (1.969")	19 (0.748")	15.0 (0.591")	x

HSK E32, I SYSTEM, BASE FOR EXTENSION

Order Number	Part Name	Base	Length	D	L	Weight (lbs)
T00HE32926-08050	HSK E32 IR08-050-EX	IR08	50 (1.969")	12 (0.472")	30.6 (1.205")	x
T00HE32926-8S050	HSK E32 IR8S-050-EX	IR8S	50 (1.969")	16 (0.630")	30.6 (1.205")	x
T00HE32926-11070	HSK E32 IR11-070-EX	IR11	70 (2.756")	19 (0.748")	35 (1.378")	x

HSK E40, I SYSTEM, BASE FOR EXTENSION

Order Number	Part Name	Base	Length	D	L	Weight (lbs)
T00HE40926-08050	HSK E40 IR08-050-EX	IR08	50 (1.969")	12 (0.472")	30.6 (1.205")	0.66
T00HE40926-8S050	HSK E40 IR8S-050-EX	IR8S	50 (1.969")	16 (0.630")	30.6 (1.205")	x
T00HE40926-11080	HSK E40 IR11-080-EX	IR11	80 (3.150")	19 (0.748")	45 (1.772")	0.66
T00HE40926-16080	HSK E40 IR16-080-EX	IR16	80 (3.150")	28 (1.102")	26 (1.024")	0.71
T00HE40926-20080	HSK E40 IR20-080-EX	IR20	80 (3.150")	34 (1.339")	25 (0.984")	0.71

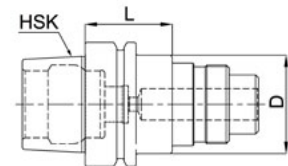
HSK E50, I SYSTEM, BASE FOR EXTENSION

Order Number	Part Name	Base	Length	D	L	Weight (lbs)
T00HE50926-08050	HSK E50 IR08-050-EX	IR08	50 (1.969")	12 (0.472")	30.6 (1.205")	0.93
T00HE50926-8S050	HSK E50 IR8S-050-EX	IR8S	50 (1.969")	16 (0.630")	30.6 (1.205")	0.95
T00HE50926-11070	HSK E50 IR11-070-EX	IR11	70 (2.756")	19 (0.748")	35 (1.378")	1.01
T00HE50926-16100	HSK E50 IR16-100-EX	IR16	100 (3.937")	28 (1.102")	46 (1.811")	1.28
T00HE50926-20100	HSK E50 IR20-100-EX	IR20	100 (3.937")	34 (1.339")	45 (1.772")	1.39
T00HE50926-25110	HSK E50 IR25-110-EX	IR25	110 (4.331")	42 (1.654")	48 (1.890")	1.74
T00HE50926-32120	HSK E50 IR32-120-EX	IR32	120 (4.724")	50 (1.969")	54.5 (2.146")	2.14

HSK E63, I SYSTEM, BASE FOR EXTENSION

Order Number	Part Name	Base	Length	D	L	Weight (lbs)
T00HE63926-08070	HSK E63 IR08-070-EX	IR08	70 (2.756")	12 (0.472")	50.6 (1.992")	x
T00HE63926-8S070	HSK E63 IR8S-070-EX	IR8S	70 (2.756")	16 (0.630")	50.6 (1.992")	x
T00HE63926-11070	HSK E63 IR11-070-EX	IR11	70 (2.756")	19 (0.748")	35 (1.378")	x
T00HE63926-16100	HSK E63 IR16-100-EX	IR16	100 (3.937")	28 (1.102")	46 (1.811")	x
T00HE63926-20100	HSK E63 IR20-100-EX	IR20	100 (3.937")	34 (1.339")	45 (1.772")	x
T00HE63926-25100	HSK E63 IR25-100-EX	IR25	100 (3.937")	42 (1.654")	38 (1.496")	x
T00HE63926-32110	HSK E63 IR32-110-EX	IR32	110 (4.331")	50 (1.969")	44.5 (1.752")	x

HSK E
BASE HOLDER





HSK F BASE HOLDER

I System Tool Holder

Taper Angle Tolerance: $\pm 0.003\text{mm}$
 Case Hardened: HRC 56 ± 2
 Seat Runout: 0.003mm
 Balance: G2.5, 25,000 rpm *Option to G2.5, 60,000 rpm

HSK F32, I SYSTEM, BASE FOR EXTENSION

Order Number	Part Name	Base	Length	D	L	Weight (lbs)
T00HF40926-08050	HSK F40 IR08-050-EX	IR08	50 (1.969")	12 (0.472")	30.6 (1.205")	x
T00HF40926-8S050	HSK F40 IR8S-050-EX	IR8S	50 (1.969")	16 (0.630")	30.6 (1.205")	x
T00HF40926-11070	HSK F40 IR11-070-EX	IR11	70 (2.756")	19 (0.748")	45 (1.772")	x
T00HF40926-16100	HSK F40 IR16-100-EX	IR16	100 (3.937")	28 (1.102")	26 (1.024")	x
T00HF40926-20100	HSK F40 IR20-100-EX	IR20	100 (3.937")	34 (1.339")	25 (0.984")	1.08

HSK F50, I SYSTEM, BASE FOR EXTENSION

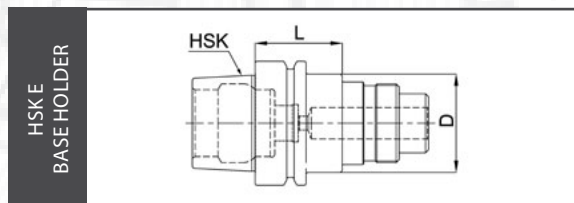
Order Number	Part Name	Base	Length	D	L	Weight (lbs)
T00HF50926-08050	HSK F50 IR08-050-EX	IR08	50 (1.969")	12 (0.472")	30.6 (1.205")	x
T00HF50926-8S050	HSK F50 IR8S-050-EX	IR8S	50 (1.969")	16 (0.630")	30.6 (1.205")	x
T00HF50926-11070	HSK F50 IR11-070-EX	IR11	70 (2.756")	19 (0.748")	35 (1.378")	x
T00HF50926-16100	HSK F50 IR16-100-EX	IR16	100 (3.937")	28 (1.102")	46 (1.811")	x
T00HF50926-20100	HSK F50 IR20-100-EX	IR20	100 (3.937")	34 (1.339")	45 (1.772")	x
T00HF50926-25110	HSK F50 IR25-110-EX	IR25	110 (4.331")	42 (1.654")	48 (1.890")	x
T00HF50926-32120	HSK F50 IR32-120-EX	IR32	120 (4.724")	50 (1.969")	54.5 (2.146")	x

HSK F63, I SYSTEM, BASE FOR EXTENSION

Order Number	Part Name	Base	Length	D	L	Weight (lbs)
T00HF63926-08050	HSK F63 IR08-050-EX	IR08	50 (1.969")	12 (0.472")	30.6 (1.205")	1.46
T00HF63926-8S050	HSK F63 IR8S-050-EX	IR8S	50 (1.969")	16 (0.630")	30.6 (1.205")	1.48
T00HF63926-11070	HSK F63 IR11-070-EX	IR11	70 (2.756")	19 (0.748")	35 (1.378")	1.54
T00HF63926-16100	HSK F63 IR16-100-EX	IR16	100 (3.937")	28 (1.102")	46 (1.811")	1.81
T00HF63926-20100	HSK F63 IR20-100-EX	IR20	100 (3.937")	34 (1.339")	45 (1.772")	1.92
T00HF63926-25100	HSK F63 IR25-100-EX	IR25	100 (3.937")	42 (1.654")	38 (1.496")	2.09
T00HF63926-32100	HSK F63 IR32-100-EX	IR32	100 (3.937")	50 (1.969")	44.5 (1.752")	2.27
T00HF63926-40120	HSK F63 IR40-120-EX	IR40	120 (4.724")	63 (2.480")	50.5 (1.988")	3.02

HSK F80, I SYSTEM, BASE FOR EXTENSION

Order Number	Part Name	Base	Length	D	L	Weight (lbs)
T00HF80926-08050	HSK F80 IR08-050-EX	IR08	50 (1.969")	12 (0.472")	30.6 (1.205")	x
T00HF80926-8S050	HSK F80 IR8S-050-EX	IR8S	50 (1.969")	16 (0.630")	30.6 (1.205")	x
T00HF80926-11070	HSK F80 IR11-070-EX	IR11	70 (2.756")	19 (0.748")	35 (1.378")	x
T00HF80926-16100	HSK F80 IR16-100-EX	IR16	100 (3.937")	28 (1.102")	46 (1.811")	x
T00HF80926-20100	HSK F80 IR20-100-EX	IR20	100 (3.937")	34 (1.339")	45 (1.772")	x
T00HF80926-25100	HSK F80 IR25-100-EX	IR25	100 (3.937")	42 (1.654")	38 (1.496")	x
T00HF80926-32110	HSK F80 IR32-110-EX	IR32	110 (4.331")	50 (1.969")	44.5 (1.752")	x
T00HF80926-40120	HSK F80 IR40-120-EX	IR40	120 (4.724")	63 (2.480")	50.5 (1.988")	x





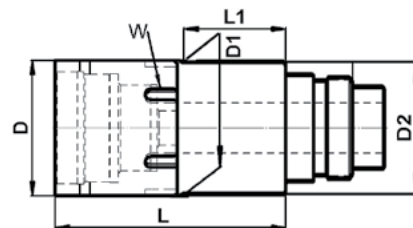
EXTENSION BASE SHANK INCH (926)

I System Tool Holder

EXTENSION BASE SHANK

Order Number	Part Name	Base Coupling	Front Coupling	Length	D	D1	D2	L1	L	Wrench	Weight (lbs)
T12ER08A926A08034	IR08-IR08-1.32"-EX	IR08	IR08	1.32"	0.470"	0.470"	0.470"	x	1.32"	T07IR0801	0.07
T12ER08A926A08051	IR08-IR08-2.00"-EX	IR08	IR08	2.00"	0.470"	0.470"	0.470"	x	2.00"	T07IR0801	0.09
T12ER08A926A08072	IR08-IR08-2.84"-EX	IR08	IR08	2.84"	0.470"	0.470"	0.470"	x	2.84"	T07IR0801	0.13
T12ER08A926A08102	IR08-IR08-4.00"-EX	IR08	IR08	4.00"	0.470"	0.470"	0.470"	x	4.00"	T07IR0801	0.20
T12ER8SA926A8S102	IR8S-IR8S-4.00"-EX	IR8S	IR8S	4.00"	0.630"	0.630"	0.630"	x	4.00"	T07IR8S01	0.33
T12ER8SA926A8S127	IR8S-IR8S-5.00"-EX	IR8S	IR8S	5.00"	0.630"	0.630"	0.630"	x	5.00"	T07IR8S01	0.42
T12ER11A926A11102	IR11-IR11-4.00"-EX	IR11	IR11	4.00"	0.750"	0.750"	0.750"	x	4.00"	T07ER1101	0.00
T12ER11A926A11127	IR11-IR11-5.00"-EX	IR11	IR11	5.00"	0.750"	0.750"	0.750"	x	5.00"	T07ER1101	0.57
T12ER11A926A11203	IR11-IR11-8.00"-EX	IR11	IR11	8.00"	0.750"	0.750"	0.750"	x	8.00"	T07ER1101	0.93
T12ER16A926A16102	IR16-IR16-4.00"-EX	IR16	IR16	4.00"	1.103"	1.103"	1.103"	x	4.00"	T07ER1601	0.86
T12ER16A926A16127	IR16-IR16-5.00"-EX	IR16	IR16	5.00"	1.103"	1.103"	1.103"	x	5.00"	T07ER1601	1.15
T12ER16A926A16203	IR16-IR16-8.00"-EX	IR16	IR16	8.00"	1.103"	1.103"	1.103"	x	8.00"	T07ER1601	1.83
T12ER20A926A20102	IR20-IR20-4.00"-EX	IR20	IR20	4.00"	1.340"	1.340"	1.340"	x	4.00"	T07IR2004	1.28
T12ER20A926A20127	IR20-IR20-5.00"-EX	IR20	IR20	5.00"	1.340"	1.340"	1.340"	x	5.00"	T07IR2004	1.65
T12ER20A926A20203	IR20-IR20-8.00"-EX	IR20	IR20	8.00"	1.340"	1.340"	1.340"	x	8.00"	T07IR2004	2.65
T12ER25A926A25102	IR25-IR25-4.00"-EX	IR25	IR25	4.00"	1.660"	1.660"	1.660"	x	4.00"	T07IR2504	2.05
T12ER25A926A25127	IR25-IR25-5.00"-EX	IR25	IR25	5.00"	1.660"	1.660"	1.660"	x	5.00"	T07IR2504	2.56
T12ER25A926A25203	IR25-IR25-8.00"-EX	IR25	IR25	8.00"	1.660"	1.660"	1.660"	x	8.00"	T07IR2504	4.15
T12ER32A926A32102	IR32-IR32-4.00"-EX	IR32	IR32	4.00"	1.970"	1.970"	1.970"	x	4.00"	T07IR3204	2.78
T12ER32A926A32127	IR32-IR32-5.00"-EX	IR32	IR32	5.00"	1.970"	1.970"	1.970"	x	5.00"	T07IR3204	3.51
T12ER32A926A32203	IR32-IR32-8.00"-EX	IR32	IR32	8.00"	1.970"	1.970"	1.970"	x	8.00"	T07IR3204	5.67
T12ER40A926A40102	IR40-IR40-4.00"-EX	IR40	IR40	4.00"	2.480"	2.480"	2.480"	x	4.00"	T07IR4004	4.19
T12ER40A926A40127	IR40-IR40-5.00"-EX	IR40	IR40	5.00"	2.480"	2.480"	2.480"	x	5.00"	T07IR4004	5.25
T12ER41A926A41102	IR41-IR41-4.00"-EX	IR41	IR41	4.00"	2.750"	2.750"	2.750"	x	4.00"	T07IR4104	0.00

EXTENSION BASE SHANK





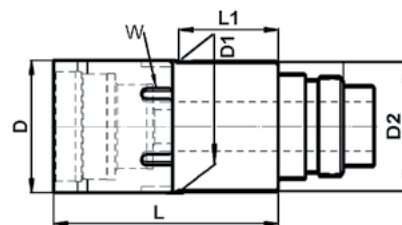
EXTENSION BASE SHANK METRIC (926)

I System Tool Holder

EXTENSION BASE SHANK

Order Number	Part Name	Base Coupling	Front Coupling	Length	D	D1	D2	L1	L	Wrench	Weight (lbs)
T12ER08A926-08035	IR08-IR08-035-EX	IR08	IR08	35	12	12	12	X	35	T07IR0801	0.07
T12ER08A926-08050	IR08-IR08-050-EX	IR08	IR08	50	12	12	12	X	50	T07IR0801	0.09
T12ER08A926-08100	IR08-IR08-100-EX	IR08	IR08	100	12	12	12	X	100	T07IR0801	0.18
T12ER8SA926-8S050	IR8S-IR8S-050-EX	IR8S	IR8S	50	16	16	16	X	50	T07IR8S01	0.18
T12ER8SA926-8S100	IR8S-IR8S-100-EX	IR8S	IR8S	100	16	16	16	X	100	T07IR8S01	0.33
T12ER11A926-11100	IR11-IR11-100-EX	IR11	IR11	100	19	19	19	x	100	T07ER1101	0.42
T12ER11A926-11200	IR11-IR11-200-EX	IR11	IR11	200	19	19	19	x	200	T07ER1101	0.88
T12ER16A926-16100	IR16-IR16-100-EX	IR16	IR16	100	28	28	28	X	100	T07ER1601	0.84
T12ER16A926-16112	IR16-IR16-112-EX	IR16	IR16	112	28	28	28	x	112	T07ER1601	1.01
T12ER16A926-16200	IR16-IR16-200-EX	IR16	IR16	200	28	28	28	X	200	T07ER1601	1.81
T12ER20A926-20100	IR20-IR20-100-EX	IR20	IR20	100	34	34	34	x	100	T07IR2004	1.52
T12ER20A926-20112	IR20-IR20-112-EX	IR20	IR20	112	34	34	34	x	112	T07IR2004	1.10
T12ER20A926-20200	IR20-IR20-200-EX	IR20	IR20	200	34	34	34	x	200	T07IR2004	2.60
T12ER25A926-25100	IR25-IR25-100-EX	IR25	IR25	100	42	42	42	x	100	T07IR2504	1.90
T12ER25A926-25112	IR25-IR25-112-EX	IR25	IR25	112	42	42	42	x	112	T07IR2504	2.07
T12ER25A926-25200	IR25-IR25-200-EX	IR25	IR25	200	42	42	42	x	200	T07IR2504	3.97
T12ER32A926-32100	IR32-IR32-100-EX	IR32	IR32	100	50	50	50	x	100	T07IR3204	2.73
T12ER32A926-32200	IR32-IR32-200-EX	IR32	IR32	200	50	50	50	x	200	T07IR3204	2.73
T12ER40A926-40100	IR40-IR40-100-EX	IR40	IR40	100	63	63	63	x	100	T07IR4004	4.21
T12ER40A926-40112	IR40-IR40-112-EX	IR40	IR40	112	63	63	63	x	112	T07IR4004	4.72
T12ER41A926-41100	IR41-IR41-100-EX	IR41	IR41	100	70	70	70	x	100	T07IR4104	x

EXTENSION BASE SHANK





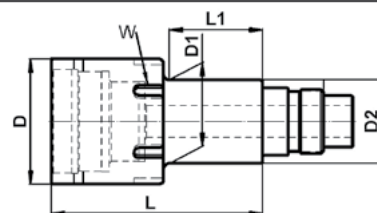
REDUCTION EXTENSION BASE SHANK METRIC (926)

EXTENSION BASE SHANK

I System Tool Holder

Order Number	Part Name	Base Coupling	Front Coupling	Length	D	D1	D2	L1	L	Wrench	Weight (lbs)
T12ER8SA926-08050	IR8S-IR08-050-EX	IR8S	IR08	50	16	14	12	14	50	T07IR8S01	0.15
T12ER8SA926-08100	IR8S-IR08-100-EX	IR8S	IR08	100	16	16	12	46	100	T07IR8S01	0.29
T12ER11A926-08020	IR11-IR08-020-EX	IR11	IR08	20	19	12	12	x	36	T07ER1101	0.11
T12ER11A926-08050	IR11-IR08-050-EX	IR11	IR08	50	19	15	12	29	66	T07ER1101	1.96
T12ER11A926-08070	IR11-IR08-070-EX	IR11	IR08	70	19	17	12	49	86	T07ER1101	0.22
T12ER11A926-08100	IR11-IR08-100-EX	IR11	IR08	100	19	19	12	80	116	T07ER1101	0.40
T12ER11A926-8S050	IR11-IR8S-050-EX	IR11	IR8S	50	19	16	16	29	66	T07ER1101	0.00
T12ER11A926-8S070	IR11-IR8S-070-EX	IR11	IR8S	70	19	16	16	49	86	T07ER1101	0.29
T12ER11A926-8S100	IR11-IR8S-100-EX	IR11	IR8S	100	19	16	16	79	116	T07ER1101	0.40
T12ER16A926-11050	IR16-IR11-050-EX	IR16	IR11	50	28	28	28	x	69	T07ER1601	0.51
T12ER16A926-11100	IR16-IR11-100-EX	IR16	IR11	100	28	19	19	55	119	T07ER1601	0.62
T12ER20A926-16050	IR20-IR16-050-EX	IR20	IR16	50	34	34	34	x	51	T07IR2004	0.62
T12ER20A926-16100	IR20-IR16-100-EX	IR20	IR16	100	34	28	28	53	101	T07IR2004	1.04
T12ER20A926-16112	IR20-IR16-112-EX	IR20	IR16	112	34	28	28	65	113	T07IR2004	1.19
T12ER25A926-16050	IR25-IR16-050-EX	IR25	IR16	50	42	42	42	x	58	T07ER2502	0.93
T12ER25A926-16100	IR25-IR16-100-EX	IR25	IR16	100	42	28	28	47	108	T07ER2502	1.23
T12ER25A926-16112	IR25-IR16-112-EX	IR25	IR16	112	42	28	28	59	120	T07ER2502	1.50
T12ER25A926-20050	IR25-IR20-050-EX	IR25	IR20	50	42	42	42	x	57	T07ER2502	0.90
T12ER25A926-20100	IR25-IR20-100-EX	IR25	IR20	100	42	34	34	46	107	T07ER2502	1.52
T12ER25A926-20112	IR25-IR20-112-EX	IR25	IR20	112	42	34	34	58	119	T07ER2502	1.52
T12ER32A926-16050	IR32-IR16-050-EX	IR32	IR16	50	50	34	34	4	62	T07ER3202	1.26
T12ER32A926-16100	IR32-IR16-100-EX	IR32	IR16	100	50	28	28	54	112	T07ER3202	1.59
T12ER32A926-20050	IR32-IR20-050-EX	IR32	IR20	50	50	50	50	X	61	T07ER3202	1.87
T12ER32A926-20100	IR32-IR20-100-EX	IR32	IR20	100	50	34	34	40	111	T07ER3202	1.87
T12ER32A926-25055	IR32-IR25-055-EX	IR32	IR25	55	50	50	50	X	59	T07ER3202	1.43
T12ER32A926-25100	IR32-IR25-100-EX	IR32	IR25	100	50	42	42	77	104	T07ER3202	1.74
T12ER32A926-25112	IR32-IR25-112-EX	IR32	IR25	112	50	42	42	55	116	T07ER3202	2.27
T12ER40A926-25060	IR40-IR25-060-EX	IR40	IR25	60	63	42	42	10	108	T07ER4002	0.00
T12ER40A926-25100	IR40-IR25-100-EX	IR40	IR25	100	63	42	42	50	108	T07ER4002	2.76
T12ER40A926-25112	IR40-IR25-112-EX	IR40	IR25	112	63	42	42	62	120	T07ER4002	2.89
T12ER40A926-32060	IR40-IR32-060-EX	IR40	IR32	60	63	50	50	47	104	T07ER4002	2.76
T12ER40A926-32100	IR40-IR32-100-EX	IR40	IR32	100	63	50	50	47	104	T07ER4002	2.76
T12ER40A926-32112	IR40-IR32-112-EX	IR40	IR32	112	63	50	50	59	116	T07ER4002	3.53

EXTENSION BASE SHANK





IR EXTENSION BASE STRAIGHT INCH (926)

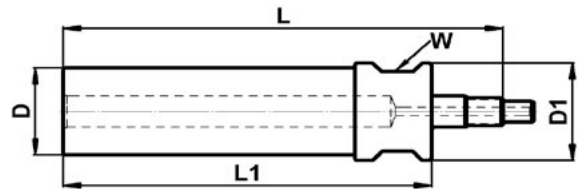
I System Tool Holder

EXTENSION BASE SHANK*

Order Number	Part Name	Shank Diameter	Front Coupling	Length	D	D1	L	L1	Wrench	Weight (lbs)
T12SS08A926A8S096	SS5/16"-IR8S-3.78"-EX	SS5/16"	IR8S	3.78"	5/16"	0.63"	4.823"	3.78"	T07IR8S01	x
T12SS08A926A11096	SS5/16"-IR11-3.78"-EX	SS5/16"	IR11	3.78"	5/16"	0.75"	4.921"	3.78"	T07ER1101	x
T12SS12A926A11096	SS1/2"-IR11-3.78"-EX	SS1/2"	IR11	3.78"	1/2"	0.75"	4.921"	3.78"	T07ER1101	x
T12SS12A926A16096	SS1/2"-IR16-3.78"-EX	SS1/2"	IR16	3.78"	1/2"	0.75"	5.413"	3.78"	T07ER1601	x
T12SS16A926A11096	SS5/8"-IR11-3.78"-EX	SS5/8"	IR11	3.78"	5/8"	0.75"	4.921"	3.78"	T07ER1101	x
T12SS16A926A16096	SS5/8"-IR16-3.78"-EX	SS5/8"	IR16	3.78"	5/8"	1.10"	5.413"	3.78"	T07ER1601	x
T12SS19A926A8S096	SS3/4"-IR8S-3.78"-EX	SS3/4"	IR8S	3.78"	3/4"	0.63"	4.823"	3.78"	T07IR8S01	x
T12SS19A926A11096	SS3/4"-IR11-3.78"-EX	SS3/4"	IR11	3.78"	3/4"	0.75"	4.921"	3.78"	T07ER1101	x
T12SS19A926A16096	SS3/4"-IR16-3.78"-EX	SS3/4"	IR16	3.78"	3/4"	1.10"	5.413"	3.78"	T07ER1601	x
T12SS19A926A20096	SS3/4"-IR20-3.78"-EX	SS3/4"	IR20	3.78"	3/4"	1.34"	5.413"	3.78"	T07IR2004	x
T12SS19A926A25096	SS3/4"-IR25-3.78"-EX	SS3/4"	IR25	3.78"	3/4"	1.34"	5.630"	3.78"	T07IR2504	x
T12SS19A926A32096	SS3/4"-IR32-3.78"-EX	SS3/4"	IR32	3.78"	3/4"	1.34"	5.512"	3.78"	T07IR3204	x
T12SS25A926A11096	SS1"-IR11-3.78"-EX	SS1"	IR11	3.78"	1"	0.75"	4.921"	3.78"	T07ER1101	x
T12SS25A926A16096	SS1"-IR16-3.78"-EX	SS1"	IR16	3.78"	1"	1.10"	5.413"	3.78"	T07ER1601	x
T12SS25A926A20096	SS1"-IR20-3.78"-EX	SS1"	IR20	3.78"	1"	1.34"	5.413"	3.78"	T07IR2004	x
T12SS25A926A25096	SS1"-IR25-3.78"-EX	SS1"	IR25	3.78"	1"	1.66"	5.630"	3.78"	T07IR2504	x
T12SS25A926A32096	SS1"-IR32-3.78"-EX	SS1"	IR32	3.78"	1"	1.97"	5.512"	3.78"	T07IR3204	x
T12SS25A926A40096	SS1"-IR40-3.78"-EX	SS1"	IR40	3.78"	1"	1.97"	5.492"	3.78"	T07IR4004	x

*No female connection, for use with standard collect chucks, end mill holders and shrink fit only.

EXTENSION BASE SHANK



ER COLLET CHUCK Mini Nut Extension (M20)

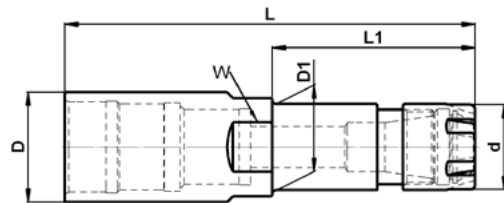


I System Tool Holder

ER COLLET CHUCK - MINI NUT

Order Number	Part Name	Base	Size	Length	D	D1	d	L	L1	Wrench	Weight (lbs)
T12ER08AM20-08060	IR08-ER08-060M	IR08	ER08M	60 (2.362")	12	12	12	79.4	x	T07IR0801	x
T12ER08AM20-08090	IR08-ER08-090M	IR08	ER08M	90 (3.543")	12	12	12	109.4	x	T07IR0801	0.15
T12ER08AM20-08100	IR08-ER08-100M	IR08	ER08M	100 (3.937")	12	12	12	119.4	x	T07IR0801	x
T12ER08AM20-08130	IR08-ER08-130M	IR08	ER08M	130 (5.118")	12	12	12	149.4	x	T07IR0801	0.20
T12ER8SAM20-08060	IR8S-ER08-060M	IR8S	ER08M	60 (2.362")	16	12	12	80	51	T07IR8S01	x
T12ER8SAM20-08100	IR8S-ER08-100M	IR8S	ER08M	100 (3.937")	16	12	12	120	91	T07IR8S01	x
T12ER8SAM20-11030	IR8S-ER11-030M	IR8S	ER11M	30 (1.181")	16	16	16	49.4	x	T07IR8S01	x
T12ER8SAM20-11060	IR8S-ER11-060M	IR8S	ER11M	60 (2.362")	16	16	16	79.4	x	T07IR8S01	x
T12ER8SAM20-11100	IR8S-ER11-100M	IR8S	ER11M	100 (3.937")	16	16	16	119.4	x	T07IR8S01	x
T12ER11AM20-08060	IR11-ER08-060M	IR11	ER08M	60 (2.362")	19	12	12	95	59	T07ER1101	0.20
T12ER11AM20-08100	IR11-ER08-100M	IR11	ER08M	100 (3.937")	19	12	12	135	99	T07ER1101	0.31
T12ER11AM20-11023	IR11-ER11-023M	IR11	ER11M	23 (0.906")	19	16	16	58	22	T07ER1101	0.11
T12ER11AM20-11060	IR11-ER11-060M	IR11	ER11M	60 (2.362")	19	16	16	95	59	T07ER1101	0.24
T12ER11AM20-11100	IR11-ER11-100M	IR11	ER11M	100 (3.937")	19	16	16	135	99	T07ER1101	0.37
T12ER16AM20-11060	IR16-ER11-060M	IR16	ER11M	60 (2.362")	28	16	16	114	61	T07ER1601	0.42
T12ER16AM20-11100	IR16-ER11-100M	IR16	ER11M	100 (3.937")	28	16	16	154	101	T07ER1601	0.53
T12ER16AM20-16060	IR16-ER16-060M	IR16	ER16M	60 (2.362")	28	22	22	114	61	T07ER1601	0.51
T12ER16AM20-16100	IR16-ER16-100M	IR16	ER16M	100 (3.937")	28	22	22	154	101	T07ER1601	0.73
T12ER16AM20-20060	IR16-ER20-060M	IR16	ER20M	60 (2.362")	28	28	28	114	x	T07ER1601	0.60
T12ER16AM20-20100	IR16-ER20-100M	IR16	ER20M	100 (3.937")	28	28	28	154	x	T07ER1601	0.95

ER COLLET CHUCK
MINI NUT





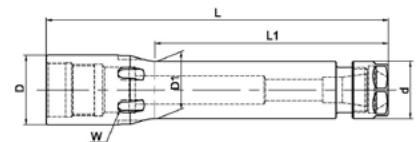
ER COLLET CHUCK Extension (020)

ER COLLET CHUCK

I System Tool Holder

Order Number	Part Name	Base	Size	Length	D	D1	d	L	L1	Wrench	Weight (lbs)
T12ER11A020-11060	IR11-ER11-060	IR11	ER11	60	19	19	19	95	x	T07ER1101	0.26
T12ER11A020-11100	IR11-ER11-100	IR11	ER11	100	19	19	19	135	x	T07ER1101	0.42
T12ER16A020-11060	IR16-ER11-060	IR16	ER11	60	28	19	19	114	48.5	T07ER1601	0.44
T12ER16A020-11100	IR16-ER11-100	IR16	ER11	100	28	19	19	154	88.5	T07ER1601	0.57
T12ER16A020-16060	IR16-ER16-060	IR16	ER16	60	28	28	28	115	x	T07ER1601	0.62
T12ER16A020-16100	IR16-ER16-100	IR16	ER16	100	28	28	28	155	x	T07ER1601	0.95
T12ER16A020-16112	IR16-ER16-112	IR16	ER16	112	28	28	28	167	x	T07ER1601	1.15
T12ER20A020-16100	IR20-ER16-100	IR20	ER16	100	34	28	28	156	105.6	T07IR2004	1.19
T12ER20A020-16112	IR20-ER16-112	IR20	ER16	112	34	28	28	168	117.6	T07IR2004	1.21
T12ER20A020-20060	IR20-ER20-060	IR20	ER20	60	34	34	34	117	x	T07IR2004	1.08
T12ER20A020-20100	IR20-ER20-100	IR20	ER20	100	34	34	34	157	x	T07IR2004	1.48
T12ER20A020-20112	IR20-ER20-112	IR20	ER20	112	34	34	34	166	x	T07IR2004	1.61
T12ER25A020-16100	IR25-ER16-100	IR25	ER16	100	42	28	28	163	104.5	T07ER2502	1.37
T12ER25A020-16112	IR25-ER16-112	IR25	ER16	112	42	28	28	175	116.5	T07ER2502	1.50
T12ER25A020-20100	IR25-ER20-100	IR25	ER20	100	42	34	34	164	104.5	T07ER2502	1.68
T12ER25A020-25060	IR25-ER25-060	IR25	ER25	60	42	42	42	122	x	T07IR2504	1.65
T12ER25A020-25100	IR25-ER25-100	IR25	ER25	100	42	42	42	162	x	T07IR2504	2.12
T12ER32A020-16100	IR32-ER16-100	IR32	ER16	100	50	28	28	166	109	T07ER3202	1.72
T12ER32A020-16112	IR32-ER16-112	IR32	ER16	112	50	28	28	178	121	T07ER3202	1.83
T12ER32A020-20100	IR32-ER20-100	IR32	ER20	100	50	35	34	166	86	T07ER3202	2.05
T12ER32A020-20112	IR32-ER20-112	IR32	ER20	112	50	35	34	178	98	T07ER3202	2.16
T12ER32A020-25100	IR32-ER25-100	IR32	ER25	100	50	42	42	166	106	T07ER3202	2.38
T12ER32A020-25112	IR32-ER25-112	IR32	ER25	112	50	42	42	178	118	T07ER3202	2.76
T12ER32A020-32060	IR32-ER32-060	IR32	ER32	60	50	50	50	126	x	T07IR3204	2.34
T12ER32A020-32100	IR32-ER32-100	IR32	ER32	100	50	50	50	166	x	T07IR3204	3.22
T12ER32A020-32112	IR32-ER32-112	IR32	ER32	112	50	50	50	178	x	T07IR3204	3.24
T12ER40A020-25100	IR40-ER25-100	IR40	ER25	100	63	42	42	170	141	T07ER4002	3.20
T12ER40A020-25112	IR40-ER25-112	IR40	ER25	112	63	42	42	182	153	T07ER4002	3.31
T12ER40A020-32100	IR40-ER32-100	IR40	ER32	100	63	50	50	170	112	T07ER4002	3.66
T12ER40A020-32112	IR40-ER32-112	IR40	ER32	112	63	50	50	182	124	T07ER4002	3.86
T12ER40A020-40060	IR40-ER40-060	IR40	ER40	60	63	63	63	130	x	T07IR4004	3.31
T12ER40A020-40100	IR40-ER40-100	IR40	ER40	100	63	63	63	170	x	T07IR4004	4.78
T12ER40A020-40112	IR40-ER40-112	IR40	ER40	112	63	63	63	182	x	T07IR4004	5.87

ER COLLET CHUCK



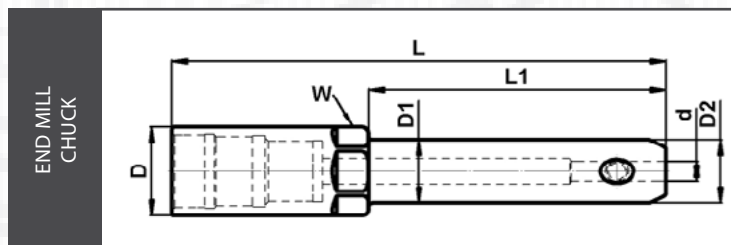
END MILL HOLDER Extension (040)



I System Tool Holder

END MILL HOLDER (METRIC)

Order Number	Part Name	Base	d (mm)	Length	D	D1	D2	L	L1	Wrench	Weight (lbs)
T12ER16A040-06060	IR16-EM06-060	IR16	06	60	28	25	25	114	52	T07ER1601	0.72
T12ER16A040-06100	IR16-EM06-100	IR16	06	100	28	25	25	154	92	T07ER1601	0.98
T12ER16A040-08060	IR16-EM08-060	IR16	08	60	28	28	28	114	x	T07ER1601	0.77
T12ER16A040-08100	IR16-EM08-100	IR16	08	100	28	28	28	154	x	T07ER1601	1.09
T12ER20A040-08112	IR20-EM08-112	IR20	08	112	34	28	28	167	x	T07IR2004	x
T12ER20A040-10060	IR20-EM10-060	IR20	10	60	34	35	35	115	65	T07IR2004	1.32
T12ER20A040-10100	IR20-EM10-100	IR20	10	100	34	35	35	155	105	T07IR2004	1.87
T12ER25A040-12060	IR25-EM12-060	IR25	12	60	42	42	42	122	x	T07IR2504	x
T12ER25A040-12100	IR25-EM12-100	IR25	12	100	42	42	42	162	x	T07IR2504	2.89
T12ER25A040-14060	IR25-EM14-060	IR25	14	60	42	44	44	122	62	T07IR2504	0.00
T12ER25A040-14100	IR25-EM14-100	IR25	14	100	42	44	44	162	102	T07IR2504	x
T12ER25A040-16060	IR25-EM16-060	IR25	16	60	42	48	48	122	62	T07IR2504	x
T12ER25A040-16100	IR25-EM16-100	IR25	16	100	42	48	48	162	102	T07IR2504	3.40
T12ER32A040-16060	IR32-EM16-060	IR32	16	60	50	48	48	126	65	T07IR3204	2.73
T12ER32A040-16100	IR32-EM16-100	IR32	16	100	50	48	48	166	105	T07IR3204	2.73
T12ER32A040-18060	IR32-EM18-060	IR32	18	60	50	50	50	126	x	T07IR3204	x
T12ER32A040-18100	IR32-EM18-100	IR32	18	100	50	50	50	166	x	T07IR3204	x
T12ER32A040-20060	IR32-EM20-060	IR32	20	60	50	52	52	126	65	T07IR3204	2.93
T12ER32A040-20100	IR32-EM20-100	IR32	20	100	50	52	52	166	105	T07IR3204	4.17
T12ER40A040-20112	IR40-EM20-112	IR40	20	112	63	52	52	182	121	T07IR4004	x
T12ER40A040-25060	IR40-EM25-060	IR40	25	60	63	63	63	129.5	x	T07IR4004	x
T12ER40A040-25100	IR40-EM25-100	IR40	25	100	63	63	63	169.5	x	T07IR4004	x
T12ER40A040-25112	IR40-EM25-112	IR40	25	112	63	63	63	181.5	x	T07IR4004	x
T12ER41A040-32060	IR41-EM32-060	IR41	32	60	70	72	72	129.5	69	T07IR4104	x
T12ER41A040-32100	IR41-EM32-100	IR41	32	100	70	72	72	169.5	109	T07IR4104	x
T12ER41A040-40100	IR41-EM40-100	IR41	40	100	70	80	80	169.5	109	T07IR4104	x
T12ER42A040-50100	IR42-EM50-100	IR42	50	100	85	92	92	169.5	109	T07IR4204	x





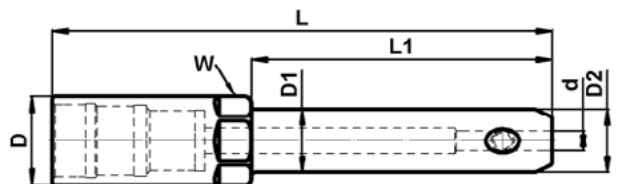
END MILL HOLDER Extension (040)

I System Tool Holder

END MILL HOLDER (INCH)

Order Number	Part Name	Base	d	Length	D	D1	D2	L	L1	Wrench	Weight (lbs)
T12ER11A040A03051	IR11-EM1/8"-2.00"	IR11	1/8"	2.00"	0.75"	0.69"	0.69"	3.38"	1.80"	T07ER1101	x
T12ER11A040A03102	IR11-EM1/8"-4.00"	IR11	1/8"	4.00"	0.75"	0.69"	0.69"	5.38"	3.80"	T07ER1101	x
T12ER11A040A05051	IR11-EM3/16"-2.00"	IR11	3/16"	2.00"	0.75"	0.79"	0.79"	3.38"	1.96"	T07ER1101	x
T12ER11A040A05102	IR11-EM3/16"-4.00"	IR11	3/16"	4.00"	0.75"	0.79"	0.79"	5.38"	3.96"	T07ER1101	x
T12ER11A040A06051	IR11-EM1/4"-2.00"	IR11	1/4"	2.00"	0.75"	0.79"	0.79"	3.38"	1.96"	T07ER1101	x
T12ER11A040A06102	IR11-EM1/4"-4.00"	IR11	1/4"	4.00"	0.75"	0.79"	0.79"	5.38"	3.96"	T07ER1101	x
T12ER16A040A06051	IR16-EM1/4"-2.00"	IR16	1/4"	2.00"	1.10"	0.79"	0.79"	4.13"	1.68"	T07ER1601	0.54
T12ER16A040A06102	IR16-EM1/4"-4.00"	IR16	1/4"	4.00"	1.10"	0.79"	0.79"	6.13"	3.68"	T07ER1601	0.77
T12ER16A040A08051	IR16-EM5/16"-2.00"	IR16	5/16"	2.00"	1.10"	1.00"	1.00"	4.13"	1.68"	T07ER1601	0.00
T12ER16A040A08102	IR16-EM5/16"-4.00"	IR16	5/16"	4.00"	1.10"	1.00"	1.00"	6.13"	3.68"	T07ER1601	0.00
T12ER16A040A09051	IR16-EM3/8"-2.00"	IR16	3/8"	2.00"	1.10"	1.00"	1.00"	4.13"	1.68"	T07ER1601	0.63
T12ER16A040A09102	IR16-EM3/8"-4.00"	IR16	3/8"	4.00"	1.10"	1.00"	1.00"	6.13"	3.68"	T07ER1601	x
T12ER20A040A12051	IR20-EM1/2"-2.00"	IR20	1/2"	2.00"	1.34"	1.34"	1.34"	4.17"	2.20"	T07IR2004	1.17
T12ER20A040A12102	IR20-EM1/2"-4.00"	IR20	1/2"	4.00"	1.34"	1.34"	1.34"	6.17"	4.20"	T07IR2004	1.87
T12ER25A040A16051	IR25-EM5/8"-2.00"	IR25	5/8"	2.00"	1.65"	1.65"	1.65"	4.44"	x	T07IR2504	1.72
T12ER25A040A16102	IR25-EM5/8"-4.00"	IR25	5/8"	4.00"	1.65"	1.65"	1.65"	6.44"	x	T07IR2504	2.71
T12ER25A040A19051	IR25-EM3/4"-2.00"	IR25	3/4"	2.00"	1.65"	1.94"	1.94"	4.44"	2.08"	T07IR2504	2.03
T12ER25A040A19102	IR25-EM3/4"-4.00"	IR25	3/4"	4.00"	1.65"	1.94"	1.94"	6.44"	4.08"	T07IR2504	3.33
T12ER32A040A22051	IR32-EM7/8"-2.00"	IR32	7/8"	2.00"	1.97"	2.00"	2.48"	4.58"	x	T07IR3204	x
T12ER32A040A22102	IR32-EM7/8"-4.00"	IR32	7/8"	4.00"	1.97"	2.00"	2.48"	6.58"	x	T07IR3204	x
T12ER40A040A25051	IR40-EM1"-2.00"	IR40	1"	2.00"	2.48"	2.36"	2.36"	4.74"	x	T07IR4004	4.08
T12ER40A040A25102	IR40-EM1"-4.00"	IR40	1"	4.00"	2.48"	2.36"	2.36"	6.74"	x	T07IR4004	4.08
T12ER40A040A32051	IR40-EM1 1/4"-2.00"	IR40	1 1/4"	2.00"	2.48"	2.48"	2.48"	4.74"	x	T07IR4004	3.88
T12ER40A040A32102	IR40-EM1 1/4"-4.00"	IR40	1 1/4"	4.00"	2.48"	2.48"	2.48"	6.74"	x	T07IR4004	6.35
T12ER41A040A38102	IR41-EM1 1/2"-4.00"	IR41	1 1/2"	4.00"	2.75"	2.75"	2.75"	6.74"	4.40"	T07IR4104	x
T12ER41A040A50102	IR41-EM2"-4.00"	IR41	2"	4.00"	2.75"	3.75"	3.75"	6.74"	4.40"	T07IR4104	x

END MILL CHUCK



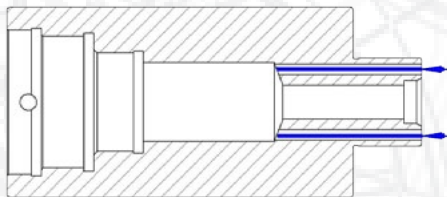
SHELL MILL HOLDER Coolant Fed Extension (130)



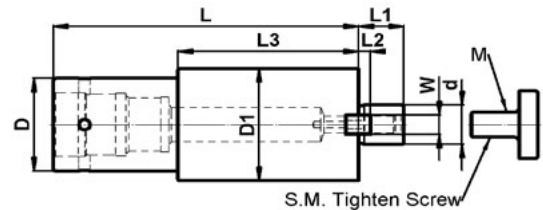
I System Tool Holder

SHELL MILL HOLDER COOLANT FED (INCH)

Order Number	Part Name	Base	d (Pilot Size)	Length	L	D	D1	L1	L2	M	L3	Weight (lbs)
T12ER25A130A19063	IR25-SM3/4"-2.50"J	IR25	3/4"	2.50"	4.67"	1.65"	1.65"	0.68"	0.18"	3/8"-24	x	x
T12ER25A130A19102	IR25-SM3/4"-4.00"J	IR25	3/4"	4.00"	6.17"	1.65"	1.65"	0.68"	0.18"	3/8"-24	x	x
T12ER32A130A19063-01	IR32-SMB3/4"-2.50"	IR32	3/4"	2.50"	3.64"	1.97"	1.97"	0.68"	0.18"	3/8"-24	x	x
T12ER32A130A19102-01	IR32-SMB3/4"-4.00"	IR32	3/4"	4.00"	5.14"	1.97"	1.97"	0.68"	0.18"	3/8"-24	x	x
T12ER32A130A25063	IR32-SM1"-2.50"J	IR32	1"	2.50"	3.64"	1.97"	2.25"	0.68"	0.22"	1/2"-20	2.60"	3.02
T12ER32A130A25102	IR32-SM1"-4.00"J	IR32	1"	4.00"	5.14"	1.97"	2.25"	0.68"	0.22"	1/2"-20	4.60"	x
T12ER40A130A25063-01	IR40-SMB1"-2.50"J	IR41	1"	2.50"	5.24"	2.48"	2.48"	0.68"	0.22"	1/2"-20	x	x
T12ER40A130A25102-01	IR40-SMB1"-4.00"J	IR41	1"	4.00"	6.74"	2.48"	2.48"	0.68"	0.22"	1/2"-20	x	x
T12ER41A130A32063	IR41-SM1 1/4"-2.50"J	IR41	1-1/4"	2.50"	5.24"	2.75"	2.75"	0.68"	0.28"	5/8"-18	x	x
T12ER41A130A32102	IR41-SM1 1/4"-4.00"J	IR41	1-1/4"	4.00"	6.74"	2.75"	2.75"	0.68"	0.28"	5/8"-18	x	5.71
T12ER41A130A32063-01	IR41-SMB1 1/4"-2.50"J	IR41	1-1/4"	2.50"	5.24"	2.75"	2.90"	0.68"	0.28"	5/8"-18	2.88"	5.29
T12ER41A130A32102-01	IR41-SMB1 1/4"-4.00"J	IR41	1-1/4"	4.00"	6.74"	2.75"	2.90"	0.68"	0.28"	5/8"-18	4.38"	7.23
T12ER42A130A38063	IR42-SM1 1/2"-2.50"J	IR42	1-1/2"	2.50"	5.24"	3.35"	3.38"	0.94"	0.35"	3/4"-16	2.88"	x
T12ER42A130A38102	IR42-SM1 1/2"-4.00"J	IR42	1-1/2"	4.00"	6.74"	3.35"	3.38"	0.94"	0.35"	3/4"-16	4.88"	x
T12ER42A130A38063-01	IR42-SMB1 1/2"-2.50"J	IR42	1-1/2"	2.50"	5.24"	3.35"	3.90"	0.94"	0.35"	3/4"-16	2.88"	x
T12ER42A130A38102-01	IR42-SMB1 1/2"-4.00"J	IR42	1-1/2"	4.00"	6.74"	3.35"	3.90"	0.94"	0.35"	3/4"-16	4.88"	x
T12ER42A130A50063	IR42-SM2"-2.50"J	IR42	2"	2.50"	5.24"	3.35"	4.88"	0.94"	0.39"	1"-14	2.88"	x
T12ER42A130A50102	IR42-SM2"-4.00"J	IR42	2"	4.00"	6.74"	3.35"	4.88"	0.94"	0.39"	1"-14	4.88"	x
T12ER42A130A50063-01	IR42-SMB2"-2.50"J	IR42	2"	2.50"	5.24"	3.35"	5.50"	0.94"	0.39"	1"-14	2.88"	x



SHELL MILL
CHUCK



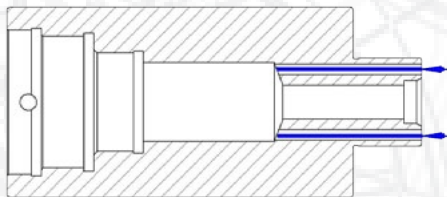
SHELL MILL HOLDER Coolant Fed Extension (130)



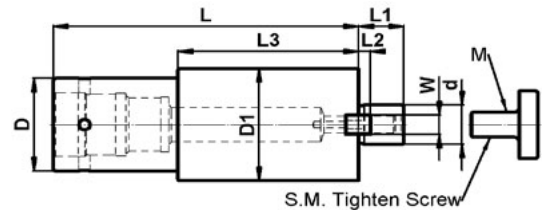
I System Tool Holder

SHELL MILL HOLDER COOLANT FED (METRIC)

Order Number	Part Name	Base	d (Pilot Size)	Length	L	D	D1	L1	L2	M	L3	Weight (lbs)
T12ER20A130-16060	IR20-SM16-060J	IR20	16	60	115	34	38	17	5	M8	61	x
T12ER20A130-16100	IR20-SM16-100J	IR20	16	100	155	34	38	17	5	M8	101	x
T12ER25A130-16060	IR25-SM16-060J	IR25	16	60	122	34	38	17	5	M8	64	x
T12ER25A130-16100	IR25-SM16-100J	IR25	16	100	162	42	38	17	5	M8	104	x
T12ER32A130-22060	IR32-SM22-060J	IR32	22	60	89	50	50	19	5	M10	x	3.02
T12ER32A130-22100	IR32-SM22-100J	IR32	22	100	129	50	50	19	5	M10	x	x
T12ER32A130-22060-01	IR32-SMB22-060J	IR32	22	60	89	50	60	19	5	M10	26	x
T12ER32A130-22100-01	IR32-SMB22-100J	IR32	22	100	129	50	60	19	5	M10	66	x
T12ER32A130-27060	IR32-SM27-060J	IR32	27	60	89	50	60	21	6	M12	26	x
T12ER32A130-27100	IR32-SM27-100J	IR32	27	100	129	50	60	21	6	M12	66	5.71
T12ER40A130-27060	IR40-SM27-060J	IR40	27	60	130	63	60	21	6	M12	69.5	5.29
T12ER40A130-27100	IR40-SM27-100J	IR40	27	100	170	63	60	21	6	M12	109.5	7.23
T12ER41A130-27060-01	IR41-SMB27-060J	IR41	32	60	130	70	80	21	6	M12	69.5	x
T12ER41A130-27100-01	IR41-SMB27-100J	IR41	32	100	170	70	80	21	6	M12	109.5	x
T12ER41A130-32060	IR41-SM32-060J	IR41	32	60	130	70	78	24	7	M16	69.5	x
T12ER41A130-32100	IR41-SM32-100J	IR41	32	100	170	70	78	24	7	M16	109.5	x
T12ER42A130-40060	IR42-SM40-060J	IR42	40	60	130	85	89	27	8.5	M20	69.5	x
T12ER42A130-40100	IR42-SM40-100J	IR42	40	100	170	85	89	27	8.5	M20	109.5	x
T12ER42A130-60060	IR42-SM60-060J	IR42	60	60	130	85	129	40	12.5	M16*4	69.5	x
T12ER42A130-60100	IR42-SM60-100J	IR42	60	100	170	85	129	40	12.5	M16*4	109.5	x



SHELL MILL
CHUCK





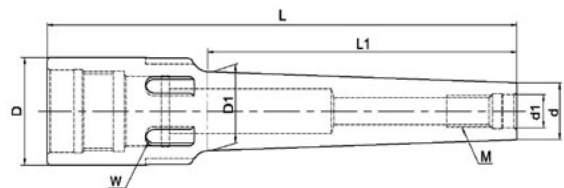
SCREW IN CHUCK Extension (200)

I System Tool Holder

SCREW IN CHUCK

Order Number	Part Name	Base	Thread Size	Length	D	D1	d	d1	L	L1	Wrench	Weight (lbs)
T12ER11A200-08060	IR11-M08-060	IR11	M08	60	19	19	13	8.5	95	55	T07ER1101	0.29
T12ER11A200-08100	IR11-M08-100	IR11	M08	100	19	19	13	8.5	135	95	T07ER1101	0.40
T12ER11A200-10060	IR11-M10-060	IR11	M10	60	19	19	18	10.5	95	55	T07ER1101	0.33
T12ER11A200-10100	IR11-M10-100	IR11	M10	100	19	19	18	10.5	135	95	T07ER1101	0.51
T12ER16A200-10060	IR16-M10-060	IR16	M10	60	28	25	18	10.5	114	58	T07ER1601	0.62
T12ER16A200-10100	IR16-M10-100	IR16	M10	100	28	25	18	10.5	154	98	T07ER1601	0.84
T12ER16A200-12060	IR16-M12-060	IR16	M12	60	28	25	21	12.5	114	58	T07ER1601	0.60
T12ER16A200-12100	IR16-M12-100	IR16	M12	100	28	25	21	12.5	154	98	T07ER1601	0.86
T12ER20A200-10060	IR20-M10-060	IR20	M10	60	34	25	18	10.5	115	62	T07IR2004	0.51
T12ER20A200-10100	IR20-M10-100	IR20	M10	100	34	25	18	10.5	155	102	T07IR2004	0.84
T12ER20A200-10112	IR20-M10-112	IR20	M10	112	34	25	18	10.5	167	110	T07IR2004	0.93
T12ER20A200-12060	IR20-M12-060	IR20	M12	60	34	24	21	12.5	115	62	T07IR2004	0.82
T12ER20A200-12100	IR20-M12-100	IR20	M12	100	34	24	21	12.5	155	102	T07IR2004	1.06
T12ER20A200-16060	IR20-M16-060	IR20	M16	60	34	34	29	17	115	53	T07IR2004	1.10
T12ER20A200-16100	IR20-M16-100	IR20	M16	100	34	34	29	17	155	102	T07IR2004	1.70
T12ER25A200-12112	IR25-M12-112	IR25	M12	112	42	24	21	12.5	143	77	T07ER2502	0.99
T12ER25A200-16112	IR25-M16-112	IR25	M16	112	42	34	29	17	143	90	T07ER2502	1.32

SCREW IN CHUCK



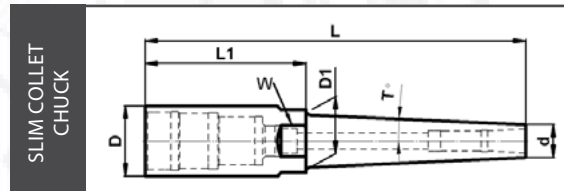


SLIM COLLET CHUCK Extension (210)

I System Tool Holder

SLIM COLLET CHUCK

Order Number	Part Name	Base	Size	Length	D	D1	T	d	L	L1	Wrench	Weight (lbs)
T12ER11A210-06100	IR11-HC06-100	IR11	HC06	3.937"	0.748"	0.748"	0.098"	0.512"	5.314"	1.417"	T07ER1101	0.42
T12ER16A210-06100	IR16-HC06-100	IR16	HC06	3.937"	1.102"	0.827"	0.098"	0.512"	6.063"	3.425"	T07ER1601	0.65
T12ER16A210-10100	IR16-HC10-100	IR16	HC10	3.937"	1.102"	1.102"	0.118"	0.827"	6.063"	2.874"	T07ER1601	0.95
T12ER20A210-16100	IR20-HC16-100	IR20	HC16	3.937"	1.339"	1.339"	0.118"	1.260"	6.102"	0.709"	T07IR2004	1.57



HC COLLETS



HC COLLETS (METRIC)

Order Number	Part Name	Collet	Shank
T03HC06-030	HC06 Collet 3mm	HC06	3
T03HC06-040	HC06 Collet 4mm	HC06	4
T03HC06-050	HC06 Collet 5mm	HC06	5
T03HC06-060	HC06 Collet 6mm	HC06	6
T03HC10-030	HC10 Collet 3mm	HC10	3
T03HC10-040	HC10 Collet 4mm	HC10	4
T03HC10-050	HC10 Collet 5mm	HC10	5
T03HC10-060	HC10 Collet 6mm	HC10	6
T03HC10-080	HC10 Collet 8mm	HC10	8
T03HC10-100	HC10 Collet 10mm	HC10	10
T03HC16-060	HC16 Collet 6mm	HC16	6
T03HC16-080	HC16 Collet 8mm	HC16	8
T03HC16-100	HC16 Collet 10mm	HC16	10
T03HC16-120	HC16 Collet 12mm	HC16	12
T03HC16-160	HC16 Collet 16mm	HC16	16

HC COLLETS (INCH)

Order Number	Part Name	Collet	Shank
T03HC06A030	HC06 Collet 1/8"	HC06	1/8"
T03HC06A050	HC06 Collet 3/16"	HC06	3/16"
T03HC06A060	HC06 Collet 1/4"	HC06	1/4"
T03HC10A030	HC10 Collet 1/8"	HC10	1/8"
T03HC10A040	HC10 Collet 3/16"	HC10	3/16"
T03HC10A060	HC10 Collet 1/4"	HC10	1/4"
T03HC10A080	HC10 Collet 5/16"	HC10	5/16"
T03HC10A100	HC10 Collet 3/8"	HC10	3/8"
T03HC16A060	HC16 Collet 1/4"	HC16	1/4"
T03HC16A080	HC16 Collet 5/16"	HC16	5/16"
T03HC16A100	HC16 Collet 3/8"	HC16	3/8"
T03HC16A120	HC16 Collet 1/2"	HC16	1/2"
T03HC16A160	HC16 Collet 5/8"	HC16	5/8"



4.5° SHRINK FIT CHUCK Extension (220)

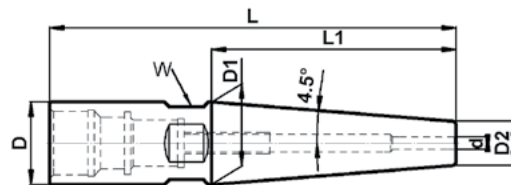
I System Tool Holder

SHRINK FIT CHUCK 4.5° (METRIC)

Order Number	Part Name	Base	d (mm)	Length	D	D1	D2	L	L1	Wrench	Weight (lbs)
T12ER8SA220-03060	IR8S-SF03-060-4.5°	IR8S	3	60	16	16	10	80	38	T07IR8S01	x
T12ER8SA220-03100	IR8S-SF03-100-4.5°	IR8S	3	100	16	16	10	120	38	T07IR8S01	x
T12ER11A220-03060	IR11-SF03-060-4.5°	IR11	3	60	19	19	10	95	57	T07ER1101	0.26
T12ER11A220-03100	IR11-SF03-100-4.5°	IR11	3	100	19	19	10	135	57	T07ER1101	0.46
T12ER11A220-04060	IR11-SF04-060-4.5°	IR11	4	60	19	19	12	95	44	T07ER1101	0.29
T12ER11A220-04100	IR11-SF04-100-4.5°	IR11	4	100	19	19	12	135	44	T07ER1101	0.49
T12ER11A220-05060	IR11-SF05-060-4.5°	IR11	5	60	19	19	12	95	44	T07ER1101	0.29
T12ER11A220-05100	IR11-SF05-100-4.5°	IR11	5	100	19	19	12	135	44	T07ER1101	0.44
T12ER16A220-06060	IR16-SF06-060-4.5°	IR16	6	60	28	28	21	114	44	T07ER1601	0.84
T12ER16A220-06100	IR16-SF06-100-4.5°	IR16	6	100	28	28	21	154	44	T07ER1601	1.28
T12ER16A220-08060	IR16-SF08-060-4.5°	IR16	8	60	28	28	21	114	44	T07ER1601	0.84
T12ER16A220-08100	IR16-SF08-100-4.5°	IR16	8	100	28	28	21	154	44	T07ER1601	1.30
T12ER16A220-10060	IR16-SF10-060-4.5°	IR16	10	60	28	28	24	114	25	T07ER1601	0.90
T12ER16A220-10100	IR16-SF10-100-4.5°	IR16	10	100	28	28	24	154	25	T07ER1601	1.37
T12ER16A220-12060	IR16-SF12-060-4.5°	IR16	12	60	28	28	24	114	25	T07ER1601	0.86
T12ER16A220-12100	IR16-SF12-100-4.5°	IR16	12	100	28	28	24	154	25	T07ER1601	1.30
T12ER20A220-14060	IR20-SF14-060-4.5°	IR20	14	60	34	34	27	115	44	T07IR2004	1.12
T12ER20A220-14100	IR20-SF14-100-4.5°	IR20	14	100	34	34	27	155	44	T07IR2004	1.70
T12ER20A220-16060	IR20-SF16-060-4.5°	IR20	16	60	34	34	27	115	44	T07IR2004	1.10
T12ER20A220-16100	IR20-SF16-100-4.5°	IR20	16	100	34	34	27	155	44	T07IR2004	1.57
T12ER25A220-18060	IR25-SF18-060-4.5°	IR25	18	60	42	42	33	122	57	T07IR2504	1.74
T12ER25A220-18100	IR25-SF18-100-4.5°	IR25	18	100	42	42	33	162	57	T07IR2504	2.51
T12ER25A220-20060	IR25-SF20-060-4.5°	IR25	20	60	42	42	33	122	57	T07IR2504	1.65
T12ER25A220-20100	IR25-SF20-100-4.5°	IR25	20	100	42	42	33	162	57	T07IR2504	2.40
T12ER32A220-25060	IR32-SF25-060-4.5°	IR32	25	60	50	50	44	126	38	T07IR3204	2.56
T12ER32A220-25100	IR32-SF25-100-4.5°	IR32	25	100	50	50	44	166	38	T07IR3204	3.77
T12ER32A220-32060	IR32-SF32-060-4.5°	IR32	32	60	50	50	44	126	38	T07IR3204	2.27
T12ER32A220-32100	IR32-SF32-100-4.5°	IR32	32	100	50	50	44	166	38	T07IR3204	3.35

*Suitable for HSS & Carbide Shank Tools

SHRINK FIT
CHUCK 4.5°





4.5° SHRINK FIT CHUCK Extension (220)

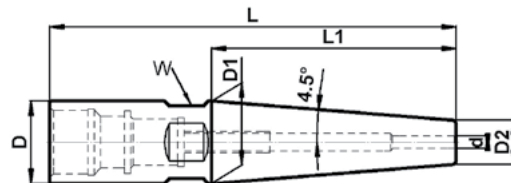
I System Tool Holder

SHRINK FIT CHUCK 4.5° (INCH)

Order Number	Part Name	Base	d (mm)	Length	D	D1	D2	L	L1	Wrench	Weight (lbs)
T12ER8SA220A03051	IR8S-SF1/8"-2.00"-4.5°	IR8S	1/8"	2.00"	0.63"	0.63"	0.40"	2.77"	1.50"	T07IR8S01	x
T12ER8SA220A03102	IR8S-SF1/8"-4.00"-4.5°	IR8S	1/8"	4.00"	0.63"	0.63"	0.40"	4.77"	1.50"	T07IR8S01	x
T12ER11A220A03051	IR11-SF1/8"-2.00"-4.5°	IR11	1/8"	2.00"	0.75"	0.66"	0.40"	3.38"	1.78"	T07ER1101	0.22
T12ER11A220A03102	IR11-SF1/8"-4.00"-4.5°	IR11	1/8"	4.00"	0.75"	0.75"	0.40"	5.38"	2.25"	T07ER1101	0.46
T12ER11A220A05051	IR11-SF3/16"-2.00"-4.5°	IR11	3/16"	2.00"	0.75"	0.75"	0.47"	3.38"	1.76"	T07ER1101	0.24
T12ER11A220A05102	IR11-SF3/16"-4.00"-4.5°	IR11	3/16"	4.00"	0.75"	0.75"	0.47"	5.38"	1.76"	T07ER1101	0.49
T12ER16A220A06051	IR16-SF1/4"-2.00"-4.5°	IR16	1/4"	2.00"	1.10"	1.10"	0.83"	4.13"	1.75"	T07ER1601	0.84
T12ER16A220A06060	IR16-SF1/4"-2.36"-4.5°	IR16	1/4"	2.36"	1.10"	1.10"	0.83"	4.49"	1.75"	T07ER1601	0.84
T12ER16A220A06102	IR16-SF1/4"-4.00"-4.5°	IR16	1/4"	4.00"	1.10"	1.10"	0.83"	6.13"	1.75"	T07ER1601	1.30
T12ER16A220A08051	IR16-SF5/16"-2.00"-4.5°	IR16	5/16"	2.00"	1.10"	1.10"	0.83"	4.13"	1.75"	T07ER1601	0.82
T12ER16A220A08060	IR16-SF5/16"-2.36"-4.5°	IR16	5/16"	2.36"	1.10"	1.10"	0.83"	4.49"	1.75"	T07ER1601	0.82
T12ER16A220A08102	IR16-SF5/16"-4.00"-4.5°	IR16	5/16"	4.00"	1.10"	1.10"	0.83"	6.13"	1.75"	T07ER1601	1.28
T12ER16A220A09051	IR16-SF3/8"-2.00"-4.5°	IR16	3/8"	2.00"	1.10"	1.10"	0.95"	4.13"	1.00"	T07ER1601	0.82
T12ER16A220A09060	IR16-SF3/8"-2.36"-4.5°	IR16	3/8"	2.36"	1.10"	1.10"	0.95"	4.49"	1.00"	T07ER1601	0.82
T12ER16A220A09102	IR16-SF3/8"-4.00"-4.5°	IR16	3/8"	4.00"	1.10"	1.10"	0.95"	6.13"	1.00"	T07ER1601	1.39
T12ER16A220A12051	IR16-SF1/2"-2.00"-4.5°	IR16	1/2"	2.00"	1.10"	1.10"	0.95"	4.13"	1.00"	T07ER1601	0.77
T12ER16A220A12060	IR16-SF1/2"-2.36"-4.5°	IR16	1/2"	2.36"	1.10"	1.10"	0.95"	4.49"	1.00"	T07ER1601	0.90
T12ER16A220A12102	IR16-SF1/2"-4.00"-4.5°	IR16	1/2"	4.00"	1.10"	1.10"	0.95"	6.13"	1.00"	T07ER1601	1.28
T12ER20A220A16051	IR20-SF5/8"-2.00"-4.5°	IR20	5/8"	2.00"	1.34"	1.34"	1.06"	4.17"	1.75"	T07IR2004	1.10
T12ER20A220A16102	IR20-SF5/8"-4.00"-4.5°	IR20	5/8"	4.00"	1.34"	1.34"	1.06"	6.17"	1.75"	T07IR2004	1.54
T12ER25A220A19051	IR25-SF3/4"-2.00"-4.5°	IR25	3/4"	2.00"	1.65"	1.65"	1.30"	4.44"	2.25"	T07IR2504	1.72
T12ER25A220A19102	IR25-SF3/4"-4.00"-4.5°	IR25	3/4"	4.00"	1.65"	1.65"	1.30"	6.44"	2.25"	T07IR2504	2.47
T12ER32A220A25051	IR32-SF1"-2.00"-4.5°	IR32	1"	2.00"	1.97"	1.97"	1.73"	4.60"	1.50"	T07IR3204	2.51
T12ER32A220A25102	IR32-SF1"-4.00"-4.5°	IR32	1"	4.00"	1.97"	1.97"	1.73"	6.60"	1.50"	T07IR3204	3.70
T12ER32A220A32051	IR32-SF1 1/4"-2.00"-4.5°	IR32	1-1/4"	2.00"	1.97"	1.97"	1.73"	4.60"	1.50"	T07IR3204	2.25
T12ER32A220A32102	IR32-SF1 1/4"-4.00"-4.5°	IR32	1-1/4"	4.00"	1.97"	1.97"	1.73"	6.60"	1.50"	T07IR3204	3.31

*Suitable for HSS & Carbide Shank Tools

SHRINK FIT
CHUCK 4.5°





4.5° SHRINK FIT CHUCK Slim Extension (230)

I System Tool Holder

SHRINK FIT CHUCK 4.5° SLIM (METRIC)

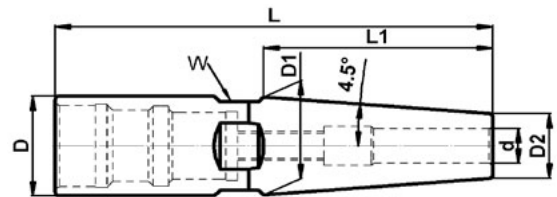
Order Number	Part Name	Base	d (mm)	Length	D	D1	D2	L	L1	Wrench	Weight (lbs)
T12ER11A230-06060	IR11-SF06-060-4.5° slim	IR11	6	60	19	19	15	95	25	T07ER1101	0.33
T12ER11A230-06100	IR11-SF06-100-4.5° slim	IR11	6	100	19	19	15	135	25	T07ER1101	0.51
T12ER11A230-08060	IR11-SF08-060-4.5° slim	IR11	8	60	19	19	15	95	25	T07ER1101	0.33
T12ER11A230-08100	IR11-SF08-100-4.5° slim	IR11	8	100	19	19	15	135	25	T07ER1101	0.51
T12ER16A230-10060	IR16-SF10-060-4.5° slim	IR16	10	60	28	27	18	114	63	T07ER1601	0.64
T12ER16A230-10100	IR16-SF10-100-4.5° slim	IR16	10	100	28	28	18	154	63	T07ER1601	1.01
T12ER16A230-12060	IR16-SF12-060-4.5° slim	IR16	12	60	28	27	18	114	63	T07ER1601	0.62
T12ER16A230-12100	IR16-SF12-100-4.5° slim	IR16	12	100	28	27	18	154	63	T07ER1601	0.95
T12ER16A230-16060	IR16-SF16-060-4.5° slim	IR16	16	60	28	28	21	114	45	T07ER1601	0.62
T12ER16A230-16100	IR16-SF16-100-4.5° slim	IR16	16	100	28	28	21	154	45	T07ER1601	0.93
T12ER20A230-20060	IR20-SF20-060-4.5° slim	IR20	20	60	34	34	25	115	57	T07IR2004	1.17
T12ER20A230-20100	IR20-SF20-100-4.5° slim	IR20	20	100	34	34	25	155	57	T07IR2004	1.76

SHRINK FIT CHUCK 4.5° SLIM (INCH)

Order Number	Part Name	Base	Size	Length	D	D1	D2	L	L1	Wrench	Weight (lbs)
T12ER11A230A06051	IR11-SF1/4"-2.00"-4.5° slim	IR11	1/4"	2.00"	0.75"	0.75"	0.590"	3.38"	1.00"	T07ER1101	0.31
T12ER11A230A06102	IR11-SF1/4"-4.00"-4.5° slim	IR11	1/4"	4.00"	0.75"	0.75"	0.590"	5.38"	1.00"	T07ER1101	0.53
T12ER11A230A08051	IR11-SF5/16"-2.00"-4.5° slim	IR11	5/16"	2.00"	0.75"	0.75"	0.590"	3.38"	1.00"	T07ER1101	0.29
T12ER11A230A08102	IR11-SF5/16"-4.00"-4.5° slim	IR11	5/16"	4.00"	0.75"	0.75"	0.590"	5.38"	1.00"	T07ER1101	0.51
T12ER16A230A09060	IR16-SF3/8"-2.36"-4.5° slim	IR16	3/8"	2.36"	1.10"	1.10"	0.710"	4.49"	2.50"	T07ER1601	0.57
T12ER16A230A09102	IR16-SF3/8"-4.00"-4.5° slim	IR16	3/8"	4.00"	1.10"	1.10"	0.710"	6.13"	2.50"	T07ER1601	1.04
T12ER16A230A12060	IR16-SF1/2"-2.36"-4.5° slim	IR16	1/2"	2.36"	1.10"	1.10"	0.710"	4.49"	2.50"	T07ER1601	0.53
T12ER16A230A12102	IR16-SF1/2"-4.00"-4.5° slim	IR16	1/2"	4.00"	1.10"	1.10"	0.710"	6.13"	2.50"	T07ER1601	0.95
T12ER16A230A16060	IR16-SF5/8"-2.36"-4.5° slim	IR16	5/8"	2.36"	1.10"	1.10"	0.827"	4.49"	1.75"	T07ER1601	0.53
T12ER16A230A16102	IR16-SF5/8"-4.00"-4.5° slim	IR16	5/8"	4.00"	1.10"	1.10"	0.827"	6.13"	1.75"	T07ER1601	0.95
T12ER20A230A19051	IR20-SF3/4"-2.00"-4.5° slim	IR20	3/4"	2.00"	1.34"	1.34"	0.984"	4.17"	2.24"	T07IR2004	1.06
T12ER20A230A19102	IR20-SF3/4"-4.00"-4.5° slim	IR20	3/4"	4.00"	1.34"	1.34"	0.984"	6.17"	2.24"	T07IR2004	1.79

*Not suitable for HSS & Carbide Shank Tools

SHRINKFIT
CHUCK 4.5° SLIM



3° SHRINK FIT CHUCK Extension (240)



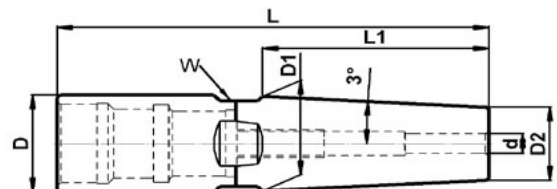
I System Tool Holder

SHRINK FIT CHUCK 3° (METRIC)

Order Number	Part Name	Base	d (mm)	Length	D	D1	D2	L	L1	Wrench	Weight (lbs)
T12ER8SA240-03060	IR8S-SF03-060-3°	IR8S	3	60	16	14	9	80	44	T07IR8S01	0.19
T12ER8SA240-03100	IR8S-SF03-100-3°	IR8S	3	100	16	16	9	120	66	T07IR8S01	0.00
T12ER8SA240-04060	IR8S-SF04-060-3°	IR8S	4	60	16	14	10	80	39	T07IR8S01	0.21
T12ER8SA240-04100	IR8S-SF04-100-3°	IR8S	4	100	16	16	10	120	57	T07IR8S01	x
T12ER8SA240-05060	IR8S-SF05-060-3°	IR8S	5	60	16	15	11	80	39	T07IR8S01	x
T12ER8SA240-05100	IR8S-SF05-100-3°	IR8S	5	100	16	16	11	120	47	T07IR8S01	x
T12ER8SA240-06060	IR8S-SF06-060-3°	IR8S	6	60	16	16	12	80	38	T07IR8S01	x
T12ER8SA240-06100	IR8S-SF06-100-3°	IR8S	6	100	16	16	12	120	38	T07IR8S01	x
T12ER11A240-03060	IR11-SF03-060-3°	IR11	3	60	19	15	9	95	58	T07ER1101	0.20
T12ER11A240-03100	IR11-SF03-100-3°	IR11	3	100	19	19	9	135	95	T07ER1101	0.37
T12ER11A240-04060	IR11-SF04-060-3°	IR11	4	60	19	16	10	95	53	T07ER1101	0.22
T12ER11A240-04100	IR11-SF04-100-3°	IR11	4	100	19	19	10	135	85	T07ER1101	0.40
T12ER11A240-05060	IR11-SF05-060-3°	IR11	5	60	19	16	11	95	54	T07ER1101	0.24
T12ER11A240-05100	IR11-SF05-100-3°	IR11	5	100	19	19	11	135	76	T07ER1101	0.40
T12ER11A240-06060	IR11-SF06-060-3°	IR11	6	60	19	18	12	95	54	T07ER1101	0.24
T12ER11A240-06100	IR11-SF06-100-3°	IR11	6	100	19	19	12	135	66	T07ER1101	0.42
T12ER11A240-08060	IR11-SF08-060-3°	IR11	8	60	19	19	14	95	47	T07ER1101	0.29
T12ER11A240-08100	IR11-SF08-100-3°	IR11	8	100	19	19	14	135	47	T07ER1101	0.46
T12ER11A240-10060	IR11-SF10-060-3°	IR11	10	60	19	19	16	95	28	T07ER1101	0.31
T12ER11A240-10100	IR11-SF10-100-3°	IR11	10	100	19	19	16	135	28	T07ER1101	0.46
T12ER11A240-12060	IR11-SF12-060-3°	IR11	12	60	21	21	18	95	28	T07ER1101	0.26
T12ER11A240-12100	IR11-SF12-100-3°	IR11	12	100	21	21	18	135	28	T07ER1101	0.42
T12ER16A240-12100	IR16-SF12-100-3°	IR16	12	100	28	28	18	154	95	T07ER1601	0.84
T12ER16A240-16060	IR16-SF16-060-3°	IR16	16	60	28	28	22	114	57	T07ER1601	0.57
T12ER16A240-16100	IR16-SF16-100-3°	IR16	16	100	28	28	22	154	57	T07ER1601	0.88
T12ER20A240-16100	IR20-SF16-100-3°	IR20	16	100	34	33	22	155	105	T07IR2004	1.19
T12ER20A240-20060	IR20-SF20-060-3°	IR20	20	60	34	34	27	115	66	T07IR2004	1.06
T12ER20A240-20100	IR20-SF20-100-3°	IR20	20	100	34	34	27	155	66	T07IR2004	1.41
T12ER25A240-25060	IR25-SF25-060-3°	IR25	25	60	42	41	34	122	64	T07IR2504	1.59
T12ER25A240-25100	IR25-SF25-100-3°	IR25	25	100	42	42	34	162	76	T07IR2504	2.14

*Not suitable for HSS & Carbide Shank Tools

SHRINK FIT
CHUCK 3°



3° SHRINK FIT CHUCK Extension (240)



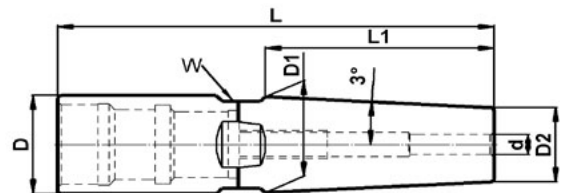
I System Tool Holder

SHRINK FIT CHUCK 3° (INCH)

Order Number	Part Name	Base	d	Length	D	D1	D2	L	L1	Wrench	Weight (lbs)
T12ER8SA240A03051	IR8S-SF1/8"-2.00"-3°	IR8S	1/8"	2.00"	0.63"	0.47"	0.354"	2.77"	1.17"	T07IR8S01	x
T12ER8SA240A03102	IR8S-SF1/8"-4.00"-3°	IR8S	1/8"	4.00"	0.63"	0.63"	0.354"	4.77"	2.63"	T07IR8S01	x
T12ER8SA240A05051	IR8S-SF3/16"-2.00"-3°	IR8S	3/16"	2.00"	0.63"	0.60"	0.433"	2.77"	1.57"	T07IR8S01	x
T12ER8SA240A05102	IR8S-SF3/16"-4.00"-3°	IR8S	3/16"	4.00"	0.63"	0.63"	0.433"	4.77"	1.87"	T07IR8S01	x
T12ER8SA240A06051	IR8S-SF1/4"-2.00"-3°	IR8S	1/4"	2.00"	0.63"	0.63"	0.472"	2.77"	1.50"	T07IR8S01	x
T12ER8SA240A06102	IR8S-SF1/4"-4.00"-3°	IR8S	1/4"	4.00"	0.63"	0.63"	0.472"	4.77"	1.50"	T07IR8S01	0.26
T12ER11A240A03051	IR11-SF1/8"-2.00"-3°	IR11	1/8"	2.00"	0.75"	0.56"	0.354"	3.38"	1.93"	T07ER1101	0.22
T12ER11A240A03102	IR11-SF1/8"-4.00"-3°	IR11	1/8"	4.00"	0.75"	0.75"	0.354"	5.38"	3.75"	T07ER1101	0.37
T12ER11A240A05051	IR11-SF3/16"-2.00"-3°	IR11	3/16"	2.00"	0.75"	0.64"	0.433"	3.38"	1.96"	T07ER1101	0.22
T12ER11A240A05102	IR11-SF3/16"-4.00"-3°	IR11	3/16"	4.00"	0.75"	0.75"	0.433"	5.38"	3.00"	T07ER1101	0.42
T12ER11A240A06051	IR11-SF1/4"-2.00"-3°	IR11	1/4"	2.00"	0.75"	0.66"	0.472"	3.38"	1.77"	T07ER1101	0.24
T12ER11A240A06102	IR11-SF1/4"-4.00"-3°	IR11	1/4"	4.00"	0.75"	0.75"	0.472"	5.38"	2.63"	T07ER1101	0.26
T12ER11A240A08051	IR11-SF5/16"-2.00"-3°	IR11	5/16"	2.00"	0.75"	0.75"	0.551"	3.38"	1.87"	T07ER1101	0.26
T12ER11A240A08102	IR11-SF5/16"-4.00"-3°	IR11	5/16"	4.00"	0.75"	0.75"	0.551"	5.38"	1.87"	T07ER1101	0.46
T12ER11A240A09051	IR11-SF3/8"-2.00"-3°	IR11	3/8"	2.00"	0.75"	0.75"	0.630"	3.38"	1.12"	T07ER1101	0.26
T12ER11A240A09102	IR11-SF3/8"-4.00"-3°	IR11	3/8"	4.00"	0.75"	0.75"	0.630"	5.38"	1.12"	T07ER1101	0.46
T12ER11A240A12051	IR11-SF1/2"-2.00"-3°	IR11	1/2"	2.00"	0.83"	0.83"	0.709"	3.38"	1.12"	T07ER1101	0.22
T12ER11A240A12102	IR11-SF1/2"-4.00"-3°	IR11	1/2"	4.00"	0.83"	0.83"	0.709"	5.38"	1.12"	T07ER1101	0.42
T12ER16A240A12102	IR16-SF1/2"-4.00"-3°	IR16	1/2"	4.00"	1.10"	1.10"	0.709"	6.13"	3.75"	T07ER1601	x
T12ER16A240A16051	IR16-SF5/8"-2.00"-3°	IR16	5/8"	2.00"	1.10"	1.10"	0.870"	4.13"	1.96"	T07ER1601	0.49
T12ER16A240A16102	IR16-SF5/8"-4.00"-3°	IR16	5/8"	4.00"	1.10"	1.10"	0.870"	6.13"	2.25"	T07ER1601	0.88
T12ER20A240A16102	IR20-SF5/8"-4.00"-3°	IR20	5/8"	4.00"	1.34"	1.34"	0.870"	6.13"	4.50"	T07IR2004	1.26
T12ER20A240A19051	IR20-SF3/4"-2.00"-3°	IR20	3/4"	2.00"	1.34"	1.29"	1.060"	4.16"	2.17"	T07IR2004	0.88
T12ER20A240A19102	IR20-SF3/4"-4.00"-3°	IR20	3/4"	4.00"	1.34"	1.34"	1.060"	6.16"	2.63"	T07IR2004	1.46
T12ER25A240A25051	IR25-SF1"-2.00"-3°	IR25	1"	2.00"	1.65"	1.57"	1.340"	4.44"	2.15"	T07IR2504	1.35
T12ER25A240A25102	IR25-SF1"-4.00"-3°	IR25	1"	4.00"	1.65"	1.65"	1.340"	6.44"	3.00"	T07IR2504	2.21

*Not suitable for HSS & Carbide Shank Tools

SHRINK FIT
CHUCK 3°



3° SHRINK FIT CHUCK Slim Extension (250)



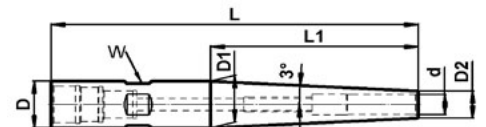
SHRINK FIT CHUCK 3° SLIM (METRIC)

I System Tool Holder

Order Number	Part Name	Base	d (mm)	Length	D	D1	D2	L	L1	HSS	Wrench	Weight (lbs)
T12ER08A250-03060	IR08-SF03-060-3° slim	IR08	3	60	12	11	6	80	43	NO	T07IR0801	x
T12ER08A250-03100	IR08-SF03-100-3° slim	IR08	3	100	12	12	6	120	57	NO	T07IR0801	x
T12ER08A250-04060	IR08-SF04-060-3° slim	IR08	4	60	12	12	7	80	47	NO	T07IR0801	x
T12ER08A250-04100	IR08-SF04-100-3° slim	IR08	4	100	12	12	7	120	47	NO	T07IR0801	x
T12ER08A250-05060	IR08-SF05-060-3° slim	IR08	5	60	12	12	8	80	38	NO	T07IR0801	x
T12ER08A250-05100	IR08-SF05-100-3° slim	IR08	5	100	12	12	8	120	38	NO	T07IR0801	x
T12ER08A250-06060	IR08-SF06-060-3° slim	IR08	6	60	12	12	9	80	28	NO	T07IR0801	x
T12ER08A250-06100	IR08-SF06-100-3° slim	IR08	6	100	12	12	9	120	28	NO	T07IR0801	x
T12ER8SA250-03060	IR8S-SF03-060-3° slim	IR8S	3	60	16	11	6	80	42	NO	T07IR8S01	x
T12ER8SA250-03100	IR8S-SF03-100-3° slim	IR8S	3	100	16	14	6	120	78	NO	T07IR8S01	x
T12ER8SA250-04060	IR8S-SF04-060-3° slim	IR8S	4	60	16	11	7	80	37	NO	T07IR8S01	x
T12ER8SA250-04100	IR8S-SF04-100-3° slim	IR8S	4	100	16	16	7	120	85	NO	T07IR8S01	x
T12ER8SA250-05060	IR8S-SF05-060-3° slim	IR8S	5	60	16	12	8	80	38	NO	T07IR8S01	x
T12ER8SA250-05100	IR8S-SF05-100-3° slim	IR8S	5	100	16	16	8	120	76	NO	T07IR8S01	x
T12ER8SA250-06060	IR8S-SF06-060-3° slim	IR8S	6	60	16	14	9	80	43	NO	T07IR8S01	x
T12ER8SA250-06100	IR8S-SF06-100-3° slim	IR8S	6	100	16	16	9	120	66	NO	T07IR8S01	x
T12ER8SA250-08060	IR8S-SF08-060-3° slim	IR8S	8	60	16	16	11	80	47	NO	T07IR8S01	x
T12ER8SA250-08100	IR8S-SF08-100-3° slim	IR8S	8	100	16	16	11	120	47	NO	T07IR8S01	x
T12ER8SA250-10060	IR8S-SF10-060-3° slim	IR8S	10	60	16	16	13	80	28	NO	T07IR8S01	x
T12ER8SA250-10100	IR8S-SF10-100-3° slim	IR8S	10	100	16	16	13	120	28	NO	T07IR8S01	x
T12ER11A250-03060	IR11-SF03-060-3° slim	IR11	3	60	19	12	6	95	59	NO	T07ER1101	0.18
T12ER11A250-03100	IR11-SF03-100-3° slim	IR11	3	100	19	16	6	135	99	NO	T07ER1101	0.26
T12ER11A250-04060	IR11-SF04-060-3° slim	IR11	4	60	19	13	7	95	57	NO	T07ER1101	0.15
T12ER11A250-04100	IR11-SF04-100-3° slim	IR11	4	100	19	17	7	135	94	NO	T07ER1101	0.29
T12ER11A250-05060	IR11-SF05-060-3° slim	IR11	5	60	19	14	8	95	58	NO	T07ER1101	0.18
T12ER11A250-05100	IR11-SF05-100-3° slim	IR11	5	100	19	18	8	135	94	NO	T07ER1101	0.31
T12ER11A250-06060	IR11-SF06-060-3° slim	IR11	6	60	19	15	9	95	59	NO	T07ER1101	0.20
T12ER11A250-06100	IR11-SF06-100-3° slim	IR11	6	100	19	19	9	135	95	NO	T07ER1101	0.33
T12ER11A250-08060	IR11-SF08-060-3° slim	IR11	8	60	19	17	11	95	59	NO	T07ER1101	0.22
T12ER11A250-08100	IR11-SF08-100-3° slim	IR11	8	100	19	19	11	135	76	NO	T07ER1101	0.40
T12ER11A250-10060	IR11-SF10-060-3° slim	IR11	10	60	19	19	13	95	57	NO	T07ER1101	0.22
T12ER11A250-10100	IR11-SF10-100-3° slim	IR11	10	100	19	19	13	135	57	NO	T07ER1101	0.40
T12ER11A250-12060	IR11-SF12-060-3° slim	IR11	12	60	19	19	15	95	38	NO	T07ER1101	0.24
T12ER11A250-12100	IR11-SF12-100-3° slim	IR11	12	100	19	19	15	135	38	NO	T07ER1101	0.37

*Not suitable for HSS & Carbide Shank Tools

SHRINK FIT
CHUCK 3° SLIM



3° SHRINK FIT CHUCK Slim Extension (250)



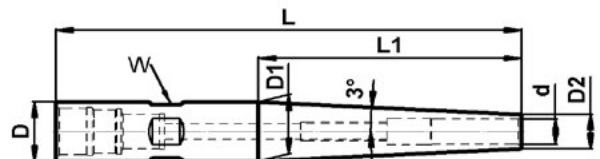
I System Tool Holder

SHRINK FIT CHUCK 3° SLIM (INCH)

Order Number	Part Name	Base	d	Length	D	D1	D2	L	L1	Wrench	Weight (lbs)
T12ER08A250A03060	IR08-SF1/8"-2.36"-3° slim	IR08	1/8"	2.36"	0.47"	0.43"	0.243"	3.13"	1.74"	T07IR0801	x
T12ER08A250A03102	IR08-SF1/8"-4.00"-3° slim	IR08	1/8"	4.00"	0.47"	0.47"	0.243"	4.77"	2.18"	T07IR0801	x
T12ER08A250A05060	IR08-SF3/16"-2.36"-3° slim	IR08	3/16"	2.36"	0.47"	0.47"	0.315"	3.13"	1.50"	T07IR0801	x
T12ER08A250A05102	IR08-SF3/16"-4.00"-3° slim	IR08	3/16"	4.00"	0.47"	0.47"	0.315"	4.77"	1.50"	T07IR0801	x
T12ER08A250A06060	IR08-SF1/4"-2.36"-3° slim	IR08	1/4"	2.36"	0.47"	0.47"	0.368"	3.13"	1.00"	T07IR0801	x
T12ER08A250A06102	IR08-SF1/4"-4.00"-3° slim	IR08	1/4"	4.00"	0.47"	0.47"	0.368"	4.77"	1.00"	T07IR0801	x
T12ER8SA250A03060	IR8S-SF1/8"-2.36"-3° slim	IR8S	1/8"	2.36"	0.63"	0.42"	0.243"	3.13"	1.67"	T07IR8S01	x
T12ER8SA250A03102	IR8S-SF1/8"-4.00"-3° slim	IR8S	1/8"	4.00"	0.63"	0.63"	0.243"	4.77"	3.68"	T07IR8S01	x
T12ER8SA250A05060	IR8S-SF3/16"-2.36"-3° slim	IR8S	3/16"	2.36"	0.63"	0.47"	0.315"	3.13"	1.46"	T07IR8S01	x
T12ER8SA250A05102	IR8S-SF3/16"-4.00"-3° slim	IR8S	3/16"	4.00"	0.63"	0.63"	0.315"	4.77"	3.00"	T07IR8S01	x
T12ER8SA250A06060	IR8S-SF1/4"-2.36"-3° slim	IR8S	1/4"	2.36"	0.63"	0.53"	0.368"	3.13"	1.51"	T07IR8S01	x
T12ER8SA250A06102	IR8S-SF1/4"-4.00"-3° slim	IR8S	1/4"	4.00"	0.63"	0.63"	0.368"	4.77"	2.49"	T07IR8S01	x
T12ER8SA250A08060	IR8S-SF5/16"-2.36"-3° slim	IR8S	5/16"	2.36"	0.63"	0.63"	0.433"	3.13"	1.87"	T07IR8S01	x
T12ER8SA250A08102	IR8S-SF5/16"-4.00"-3° slim	IR8S	5/16"	4.00"	0.63"	0.63"	0.433"	4.77"	1.87"	T07IR8S01	x
T12ER8SA250A09102	IR8S-SF3/8"-4.00"-3° slim	IR8S	3/8"	4.00"	0.63"	0.63"	0.512"	4.77"	1.12"	T07IR8S01	x
T12ER11A250A03051	IR11-SF1/8"-2.00"-3° slim	IR11	1/8"	2.00"	0.75"	0.44"	0.240"	3.38"	1.88"	T07ER1101	0.13
T12ER11A250A03102	IR11-SF1/8"-4.00"-3° slim	IR11	1/8"	4.00"	0.75"	0.66"	0.240"	5.38"	3.96"	T07ER1101	0.26
T12ER11A250A05051	IR11-SF3/16"-2.00"-3° slim	IR11	3/16"	2.00"	0.75"	0.52"	0.315"	3.38"	1.92"	T07ER1101	0.18
T12ER11A250A05102	IR11-SF3/16"-4.00"-3° slim	IR11	3/16"	4.00"	0.75"	0.71"	0.315"	5.38"	3.79"	T07ER1101	0.31
T12ER11A250A06051	IR11-SF1/4"-2.00"-3° slim	IR11	1/4"	2.00"	0.75"	0.56"	0.368"	3.38"	1.96"	T07ER1101	0.18
T12ER11A250A06102	IR11-SF1/4"-4.00"-3° slim	IR11	1/4"	4.00"	0.75"	0.75"	0.368"	5.38"	3.62"	T07ER1101	0.33
T12ER11A250A08051	IR11-SF5/16"-2.00"-3° slim	IR11	5/16"	2.00"	0.75"	0.64"	0.433"	3.38"	1.96"	T07ER1101	0.20
T12ER11A250A08102	IR11-SF5/16"-4.00"-3° slim	IR11	5/16"	4.00"	0.75"	0.75"	0.433"	5.38"	3.00"	T07ER1101	0.37
T12ER11A250A09051	IR11-SF3/8"-2.00"-3° slim	IR11	3/8"	2.00"	0.75"	0.70"	0.512"	3.38"	1.78"	T07ER1101	0.20
T12ER11A250A09102	IR11-SF3/8"-4.00"-3° slim	IR11	3/8"	4.00"	0.75"	0.75"	0.512"	5.38"	2.25"	T07ER1101	0.40
T12ER11A250A12051	IR11-SF1/2"-2.00"-3° slim	IR11	1/2"	2.00"	0.75"	0.75"	0.620"	3.38"	1.22"	T07ER1101	0.20
T12ER11A250A12100	IR11-SF1/2"-4.00"-3° slim	IR11	1/2"	4.00"	0.75"	0.75"	0.620"	5.38"	1.22"	T07ER1101	0.37

*Not suitable for HSS & Carbide Shank Tools

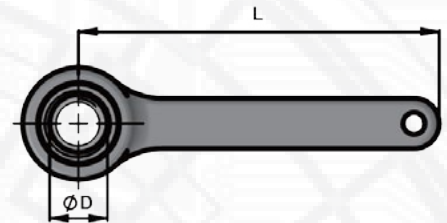
SHRINK FIT
CHUCK 3° SLIM



WRENCH

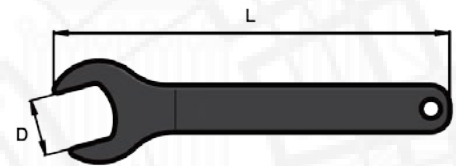
MINI WRENCH

Order Number	Part Name	D	L	NUT
T07ER0805	ER08 MINI WRENCH	12	100	ER08M
T07ER1105	ER11 MINI WRENCH	16	100	ER11M
T07ER1605	ER16 MINI WRENCH	22	120	ER16M
T07ER2005	ER20 MINI WRENCH	28	120	ER20M



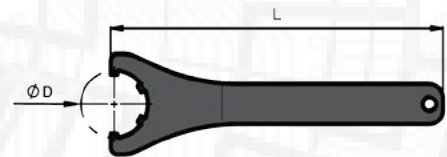
HEX WRENCH

Order Number	Part Name	D	L	NUT
T07IR0801	IR08 HEX WRENCH	11	165	-
T07IR8S01	IR8S HEX WRENCH	14	165	-
T07ER1101	ER11 HEX WRENCH	17	165	ER11 HEX
T07ER1601	ER16 HEX WRENCH	25	204	ER16 HEX
T07ER2001	ER20 HEX WRENCH	30	210	ER20 HEX



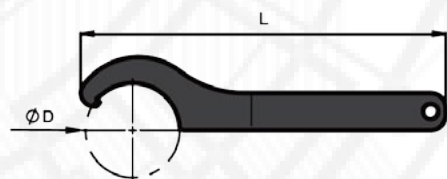
ER WRENCH

Order Number	Part Name	D	L	NUT
T07ER2502	ER25 WRENCH	42	210	ER25
T07ER3202	ER32 WRENCH	50	250	ER32
T07ER4002	ER40 WRENCH	63	290	ER40



IR WRENCH

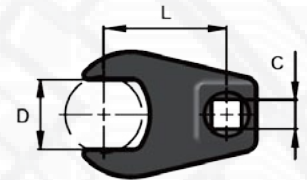
Order Number	Part Name	D	L	NUT
T07ER2004	IR20 WRENCH	34	203	ER20
T07ER2504	IR25 WRENCH	42	205	ER25
T07ER3204	IR32 WRENCH	50	240	ER32
T07ER4004	IR40 WRENCH	63	245	ER40
T07ER4104	IR41 WRENCH	70	250	-
T07ER4204	IR42 WRENCH	85	256	-



TORQUE WRENCH and ADAPTERS

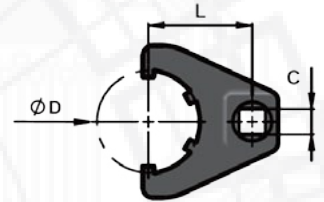
HEX WRENCH ADAPTER FOR TORQUE WRENCH

Order Number	Part Name	D	L mm	L inch	C	Nut
T07IR0801-D09	IR08 HEX WRENCH 3/8" ADAPTOR	11	50.8	2"	3/8"	-
T07IR8S01-D09	IR8S HEX WRENCH 3/8" ADAPTOR	14	50.8	2"	3/8"	-
T07ER1101-D09	ER11 HEX WRENCH 3/8" ADAPTOR	17	50.8	2"	3/8"	ER11 HEX
T07ER1601-D12	ER16 HEX WRENCH 1/2" ADAPTOR	25	50.8	2"	1/2"	ER16 HEX
T07ER2001-D12	ER20 HEX WRENCH 1/2" ADAPTOR	30	50.8	2"	1/2"	ER20 HEX



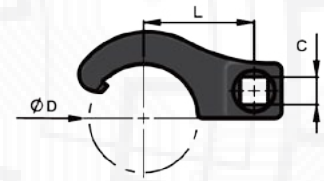
ER WRENCH ADAPTER FOR TORQUE WRENCH

Order Number	Part Name	D	L mm	L inch	C	Nut
T07ER2502-D12	ER 25 WRENCH 1/2" ADAPTOR	42	50.8	2"	1/2"	ER25
T07ER3202-D12	ER 32 WRENCH 1/2" ADAPTOR	50	50.8	2"	1/2"	ER32
T07ER4002-D12	ER 40 WRENCH 1/2" ADAPTOR	63	50.8	2"	1/2"	ER40



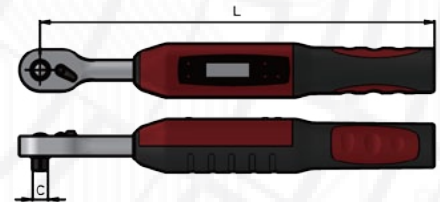
HEX WRENCH ADAPTER FOR TORQUE WRENCH

Order Number	Part Name	D	L mm	L inch	C	Nut
T07ER2004-D12	IR20 WRENCH 1/2" ADAPTOR	34	50.8	2"	1/2"	-
T07ER2504-D12	IR25 WRENCH 1/2" ADAPTOR	42	50.8	2"	1/2"	ER25
T07ER3204-D12	IR32 WRENCH 1/2" ADAPTOR	50	50.8	2"	1/2"	ER32
T07ER4004-D12	IR40 WRENCH 1/2" ADAPTOR	63	50.8	2"	1/2"	ER40
T07ER4104-D12	IR41 WRENCH 1/2" ADAPTOR	70	76.2	3"	1/2"	-
T07ER4204-D12	IR42 WRENCH 1/2" ADAPTOR	83	76.2	3"	1/2"	-



TORQUE WRENCH DIGITAL DRIVE KEY

Order Number	Part Name	C	L mm	L inch	N-m	ft-lb
T07TWD100-D09	Digital Torque Wrench 100N-m, 3/8"	3/8"	310	12.205"	10-100	7.4-74
T07TWD200-D12	Digital Torque Wrench 200N-m, 1/2"	1/2"	480	18.898"	20-200	15-147
T07TWD310-D12	Digital Torque Wrench 340N-m, 1/2"	1/2"	630	24.803"	68-340	50-250



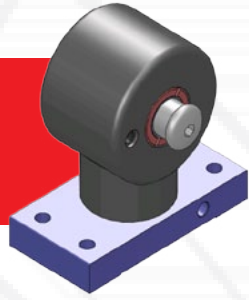
RECOMMENDED TORQUE

ER NUT	N-m	ft-lb
ER08 MINI	5	4
ER11 MINI	16	12
ER16 MINI	24	18
ER20 MINI	28	21
ER11	27	20
ER16	54	40
ER20	81	60
ER25	108	80
ER32	136	100
ER40	176	130

RECOMMENDED TORQUE

I SYSTEM	N-m	ft-lb
IR08	12	9
IR8S	12	9
IR11	30	22
IR16	60	44
IR20	85	63
IR25	115	85
IR32	140	103
IR40	163	120
IR41	163	120
IR42	163	120

UNIVERSAL CNC TIGHTENING SYSTEM



I System Tool Holder

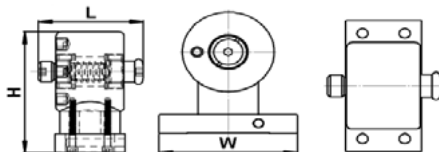
CLAMPING DEVICE BODY

Order Number	Part Name	L	W	H
T50-A001	Clamping device body	4.252	5.591	5.630

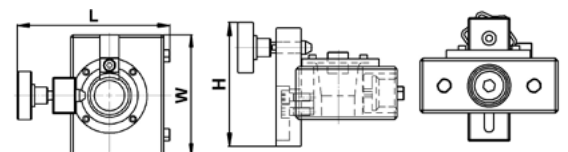
CLAMPING DEVICE

Order Number	Part Name	L	W	H	Taper Size				
T50-B001-BT30	Taper 30 clamping device	5.000"	3.937"	3.583"	BT30	ISO30			
T50-B001-BT40	Taper 40 clamping device	5.591"	3.937"	3.583"	BT40	CAT40	ISO40		
T50-B001-BT50	Taper 50 clamping device	6.654"	3.937"	3.583"	BT50	CAT50	ISO50		
T50-B001-BT50-R	Taper 50 clamping device-Rotor	6.654"	3.937"	3.583"	BT50	CAT50	ISO50		
T50-B001-HA32	HSK A32 clamping device	5.197"	3.937"	2.913"	A32	C32			
T50-B001-HA40	HSK A40 clamping device	5.354"	3.937"	2.913"	A40	C40			
T50-B001-HA50	HSK A50 clamping device	6.142"	3.937"	3.740"	A50	C50			
T50-B001-HA63	HSK A63 clamping device	5.591"	3.937"	3.583"	A63	C63			
T50-B001-HA80	HSK A80 clamping device	6.339"	3.937"	3.740"	A80				
T50-B001-HA100	HSK A100 clamping device	7.067"	3.937"	3.819"	A100				
T50-B001-HA100-R	HSK A100 clamping device w/Rotor	7.067"	3.937"	3.819"	A100				
T50-B001-HA125-R	HSK A125 clamping device w/Rotor	8.070"	4.921"	4.134"	A125				
T50-B001-HA160-R	HSK A160 clamping device w/Rotor	12.205"	4.921"	4.882"	A160				
T50-B001-HE25	HSK E25 clamping device	5.197"	3.937"	3.740"	E25				
T50-B001-HE32	HSK E32 clamping device	5.197"	3.937"	2.913"	E32	A32		F32	C3
T50-B001-HE40	HSK E40 clamping device	5.354"	3.937"	2.913"	E40	A40		F40	C4
T50-B001-HE50	HSK E50 clamping device	5.354"	3.937"	3.740"	E50	A50	B50	F50	C5
T50-B001-HE63	HSK E63 clamping device	5.591"	3.937"	3.583"	E63	A63	B63	F63	C6
T50-B001-KM32	KM 32 clamping device	5.197"	3.937"	2.913"	KM32	KZ32			
T50-B001-KM40	KM 40 clamping device	5.354"	3.937"	2.913"	KM40	KZ40			
T50-B001-KM50	KM 50 clamping device	5.354"	3.937"	3.740"	KM50	KZ50			
T50-B001-KM63	KM 63 clamping device	5.591"	3.937"	3.583"	KM63	KZ63			
T50-B001-PSC3	PSC 32 clamping device	5.197"	3.937"	2.913"	PSC 32				
T50-B001-PSC4	PSC 40 clamping device	5.354"	3.937"	2.913"	PSC 40				
T50-B001-PSC5	PSC 50 clamping device	5.354"	3.937"	3.740"	PSC 50				
T50-B001-PSC63	PSC 63 clamping device	5.591"	3.937"	3.583"	PSC 63				
T50-B001-PSC80	PSC 80 clamping device	6.339"	3.937"	3.740"	PSC 80				

CLAMPING DEVICE BODY



CLAMPING DEVICE



ORDER INFORMATION

To order or receive more information about the PrimeTool I-System Tool Holders, contact your local On Target Tooling Distributor , call 262-502-4480 or email sales@ontargettooling.com.

ABOUT ON TARGET TOOLING, LLC

On Target Tooling, LLC is a company established as a Marketing company/Manufacturers Rep firm catering to companies specializing in the field of metal cutting. On Target Tooling has a team of highly technical and specialized Regional Technical Engineers that will provide unsurpassed value, technical support, and complete solutions to end users, distributors, and both machine tool builders and distributors alike.



On Target Tooling, LLC
P.O. Box 1026
Menomonee Falls, WI 53052
(p) 262-502-4480



Modular Tool Holder System

I N F I N I T E

I-SYSTEM TOOL HOLDERS

SOLD IN NORTH AMERICA BY
ON TARGET TOOLING, LLC



Distributed by:



On Target Tooling, LLC
P.O. Box 1026
Menomonee Falls, WI 53052
(p) 262-502-4480