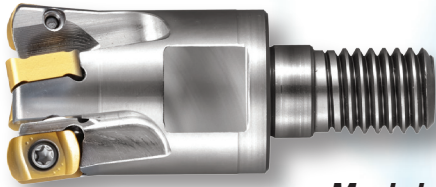


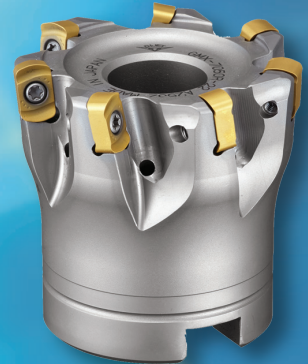


QM Max G2

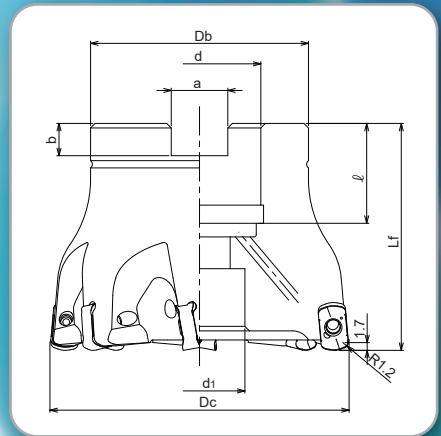
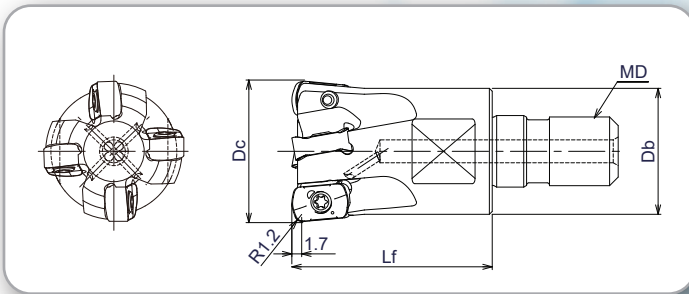
WITH DOUBLE SIDED INSERT



Modular Head



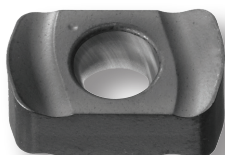
Face Mill



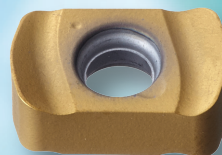
Specifications for Modular Heads & Face Mill

CATALOG NUMBER	DIMENSIONS									INSERT	Q	PARTS	
	D	Lf	Db	d	d1	a	b	l	MD			Screw	Wrench
MXG-2062-M8	.625	.905	.551	-	-	-	-	-	M8	ENMU100412ZER-PM JC7560P or JC8118P	2	TSW-2567H	T-08
MXG-3075-M10	.750	1.18	.708	-	-	-	-	-	M10		3		
MXG-3100-M12	1.00	1.38	.866	-	-	-	-	-	M12		3		
MXG-4100-M12	1.00	1.38	.866	-	-	-	-	-	M12		4		
MXG-5125-M16	1.25	1.69	1.14	-	-	-	-	-	M16		5		
MXG-6150-M16	1.50	1.69	1.26	-	-	-	-	-	M16		6		
GMX-7200R-075	2.00	2.00	1.77	.750	.63	.319	.197	.750	-		7		

INSERTS



JC8118P

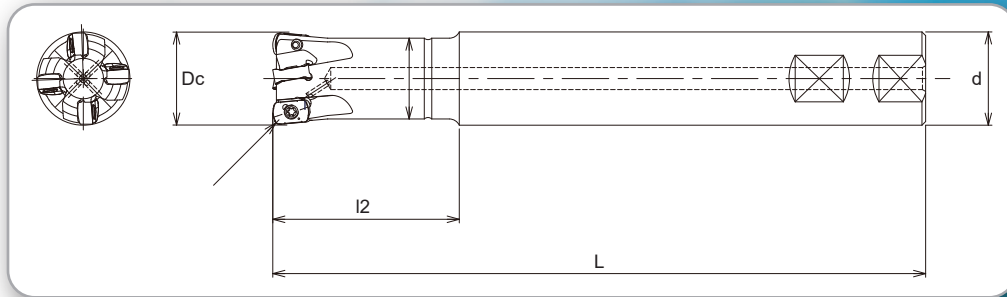


JC7560P



QM Max G2

WITH DOUBLE SIDED INSERT



Specifications for End Mills

CATALOG NUMBER	DIMENSIONS				INSERT	Q	PARTS	
	Dc	l2	L	d			Screw	Wrench
GMXS-2062-2.0-S062NP	.625	2.00	5.00	.625	ENMU100412ZER-PM JC7560P or JC8118P	2	TSW-2567H	T-08
GMXS-2062-3.0-S062NP	.625	3.00	6.25	.625		2		
GMXS-3075-2.0-S075NP	.750	2.00	5.00	.750		3		
GMXS-3075-3.0-S075NP	.750	3.00	6.25	.750		3		
GMXS-3100-2.0-S100NP	1.00	2.00	7.00	1.00		3		
GMXS-3100-3.0-S100NP	1.00	3.00	8.00	1.00		3		
GMXS-4100-2.0-S100NP	1.00	2.00	7.00	1.00		4		
GMXS-4100-3.0-S100NP	1.00	3.00	8.00	1.00		4		
GMXS-5125-3.0-S125NP	1.25	3.00	5.50	1.25		5		
GMXS-5125-4.75-S125NP	1.25	4.75	8.00	1.25		5		

Recommended starting speeds & feeds for regular length tools

****NOTE: Corner radius for programming is .059"**

Material	SFM	IPT	DOC
Cast Iron	600	.040"	.040"
Tool Steel	450	.040"	.040"
Stainless Steel	350	.025"	.040"

NOTE: Call for application support on materials not listed.